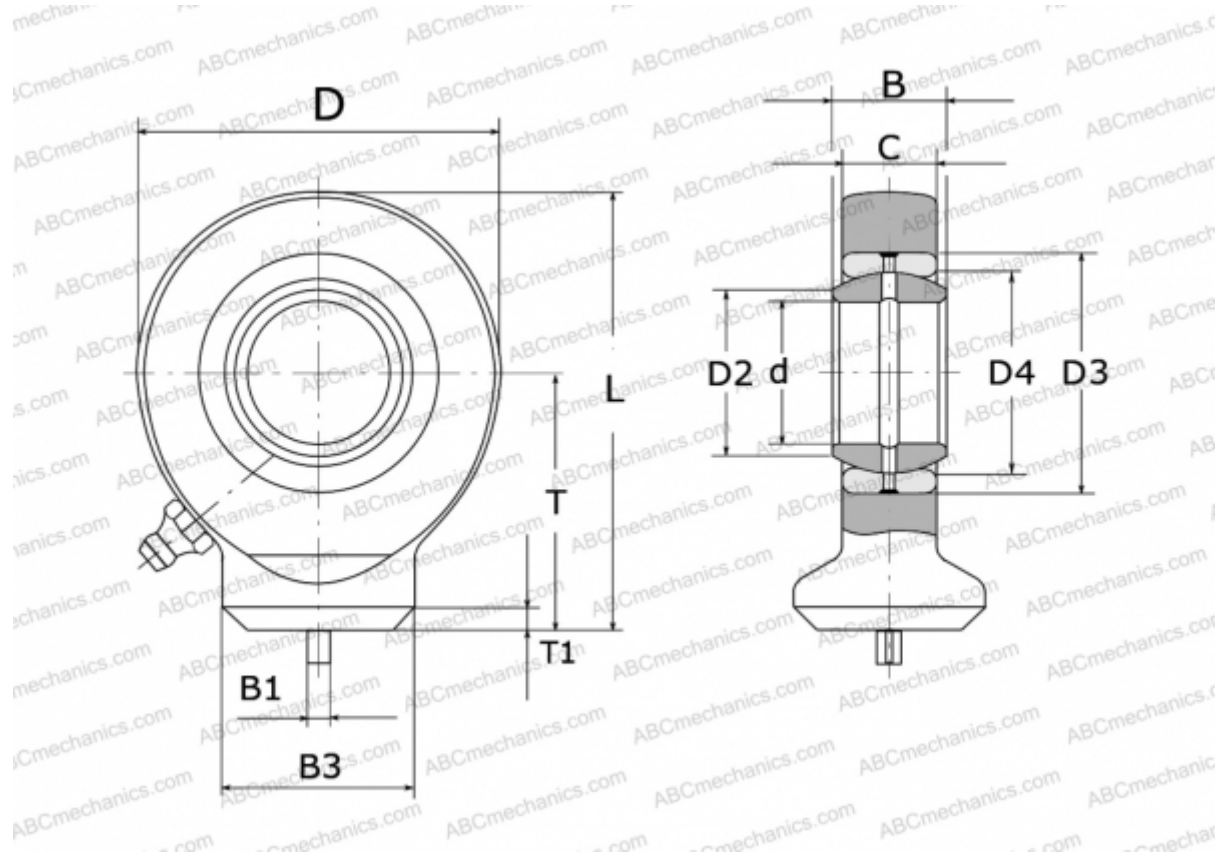


## GK 12 DO INA

TYPE: Plain bearings, Spherical plain bearings and rod ends, Rod ends, Hydraulic, Requiring maintenance, with circular welding face, open design, DIN ISO 12240-4, series GK.-DO (INA)



### Technical specification

#### DIMENSIONS, MM

d	12,000
D	34,000
D2	14,900
D3	22,000
D4	18,000
B	10,000
B1	3,000
B3	17,500
L	44,000
T	27,000
T1	2,000
C	8,000

#### MANUFACTURER

[INA](#)