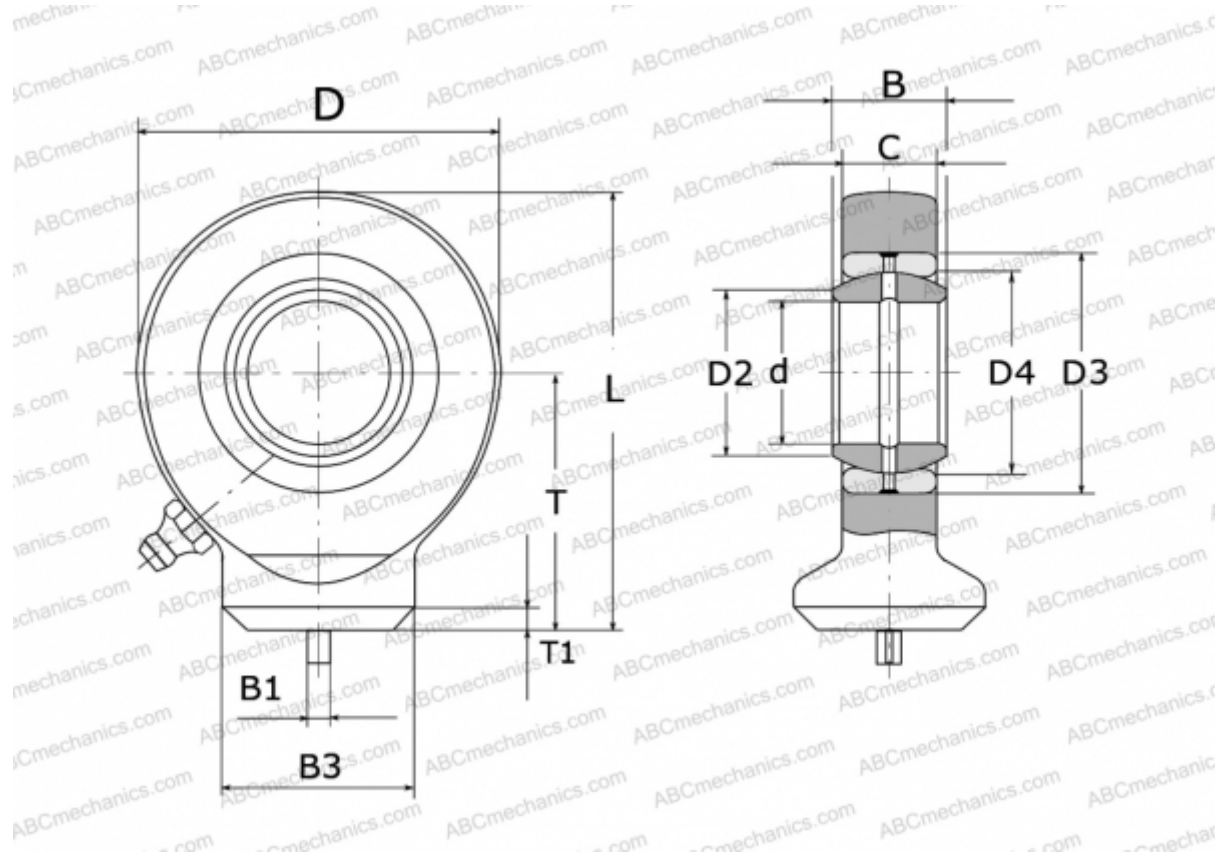


GK 20 DO INA

TYPE: Plain bearings, Spherical plain bearings and rod ends, Rod ends, Hydraulic, Requiring maintenance, with circular welding face, open design, DIN ISO 12240-4, series GK.-DO (INA)



Technical specification

DIMENSIONS, MM

d	20,000
D	53,000
D2	24,200
D3	35,000
D4	29,000
B	16,000
B1	4,000
B3	27,500
L	64,500
T	38,000
T1	3,000
C	13,000

MANUFACTURER

[INA](#)