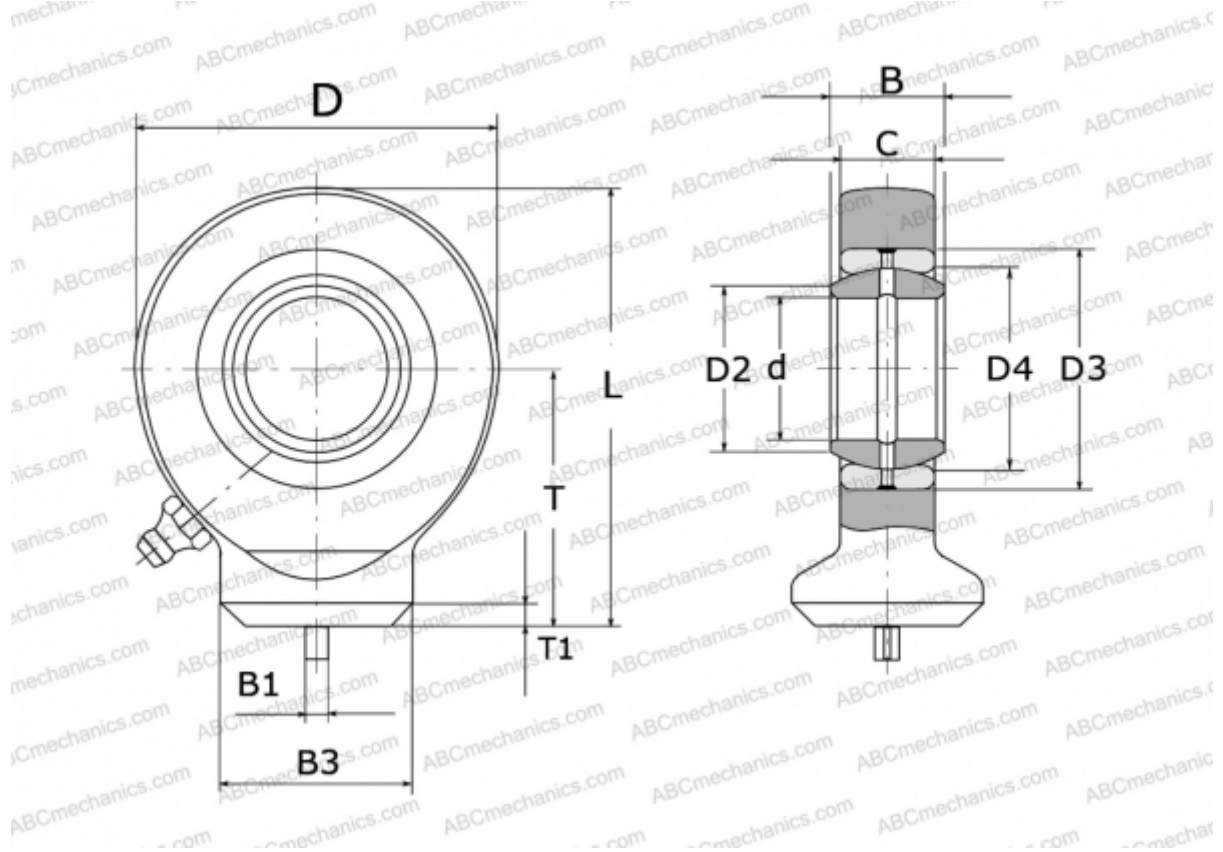


## GK 30 DO INA

TYPE: Plain bearings, Spherical plain bearings and rod ends, Rod ends, Hydraulic, Requiring maintenance, with circular welding face, open design, DIN ISO 12240-4, series GK.-DO (INA)



### Technical specification

#### DIMENSIONS, MM

d	30,000
D	73,000
D2	34,200
D3	47,000
D4	40,700
B	22,000
B1	4,000
B3	40,000
L	87,500
T	51,000
T1	4,000
C	19,000

#### MANUFACTURER

[INA](#)