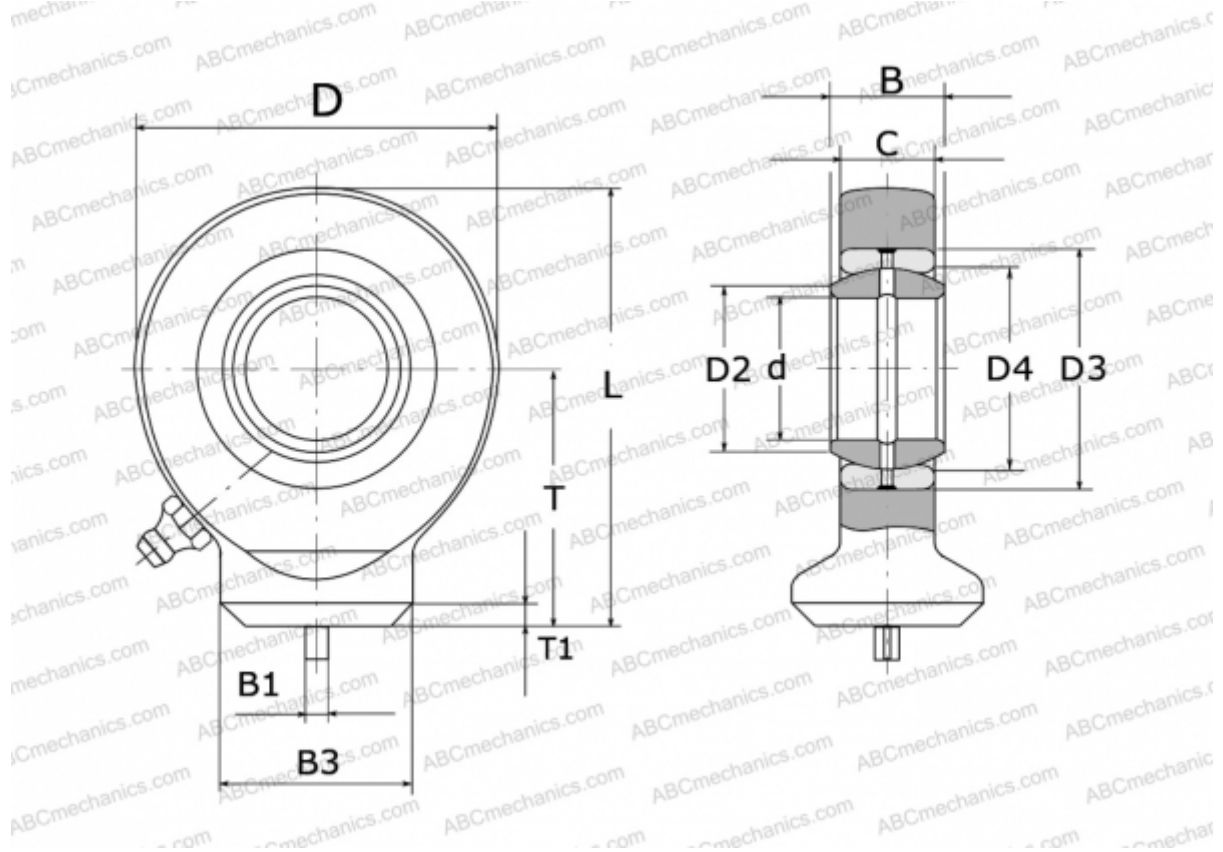


GK 40 DO INA

TYPE: Plain bearings, Spherical plain bearings and rod ends, Rod ends, Hydraulic, Requiring maintenance, with circular welding face, open design, DIN ISO 12240-4, series GK.-DO (INA)



Technical specification

DIMENSIONS, MM

d	40,000
D	92,000
D2	45,000
D3	62,000
D4	53,000
B	28,000
B1	4,000
B3	52,000
L	115,000
T	69,000
T1	5,000
C	23,000

MANUFACTURER

[INA](#)