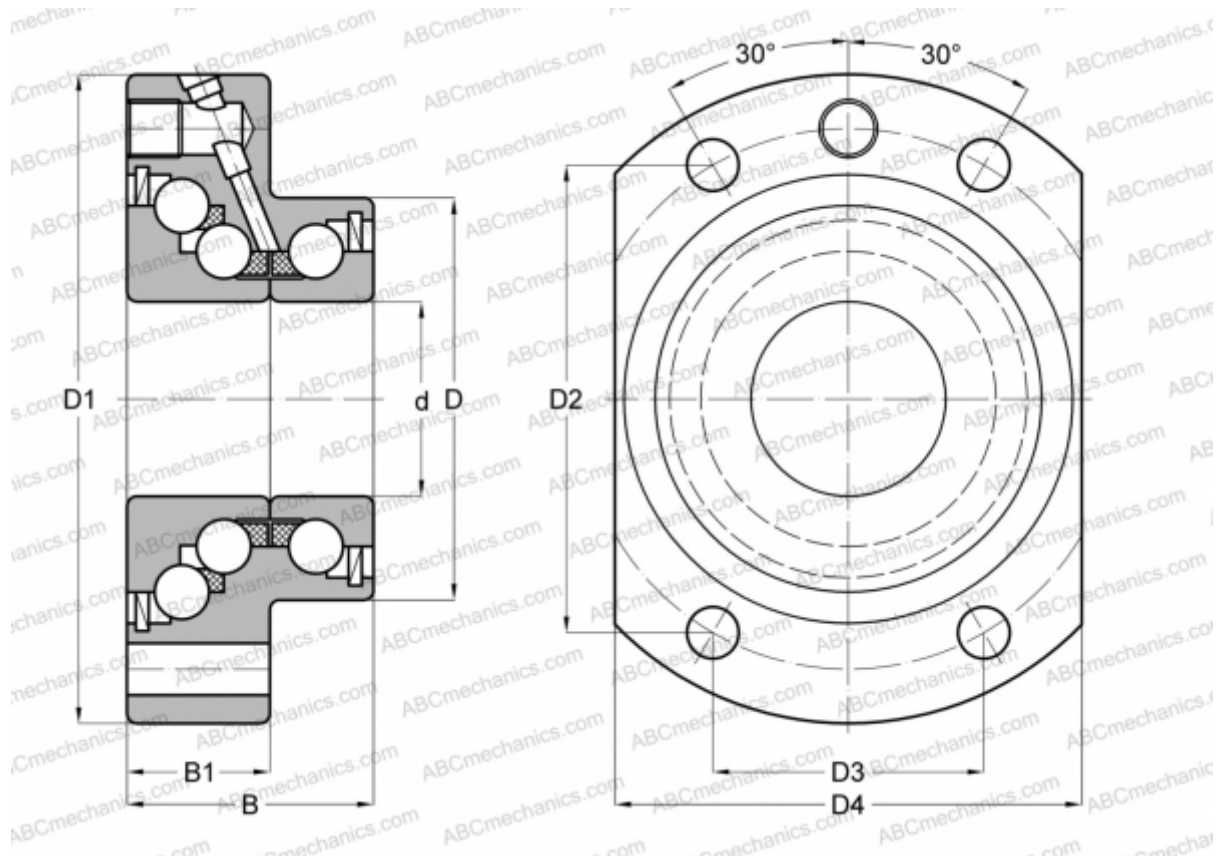


DKLFA2080-2RS INA

Axial angular contact ball bearing

TYPE: Ball bearings, Axial angular contact ball bearing, Unit, Series DKLFA, double direction, with flange, lip seals on both side



Technical specification

DIMENSIONS, MM

d	20,000
D	52,000
D1	80,000
D4	62,000
B	35,000
B1	19,000

MANUFACTURER

[INA](#)

CALCULATION DATA

Basic dynamic load rating, C	26,000 kN
Basic static load rating, Co	47,000 kN
Limiting speed	2200 r/min

ASSOCIATED PRODUCTS

AM20, ZMA20/38, ZM25