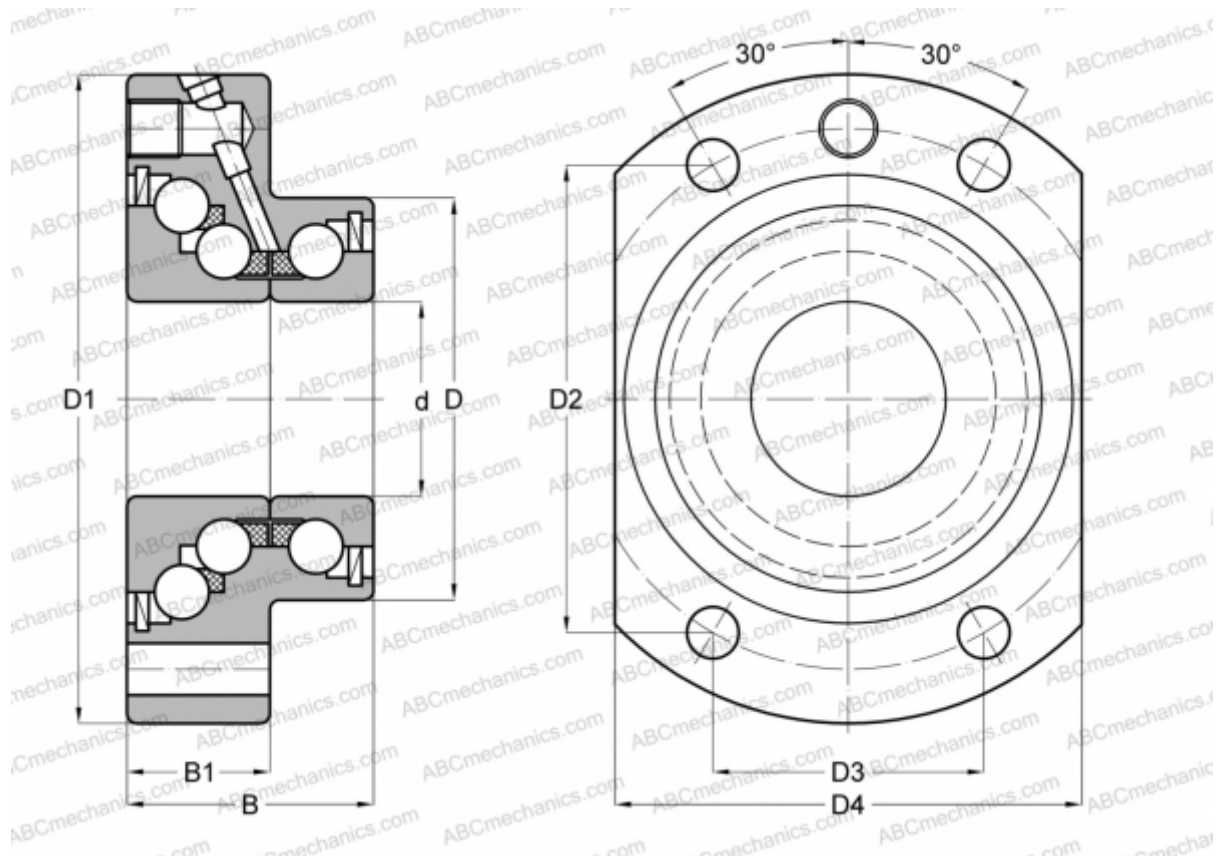


DKLFA30110-2RS INA

Axial angular contact ball bearing

TYPE: Ball bearings, Axial angular contact ball bearing, Unit, Series DKLFA, double direction, with flange, lip seals on both side



Technical specification

DIMENSIONS, MM

d	30,000
D	75,000
D1	110,000
D4	85,000
B	56,000
B1	35,000

MANUFACTURER

[INA](#)

CALCULATION DATA

Basic dynamic load rating, C	59,000 kN
Basic static load rating, Co	108,000 kN
Limiting speed	1600 r/min

ASSOCIATED PRODUCTS

AM30/65