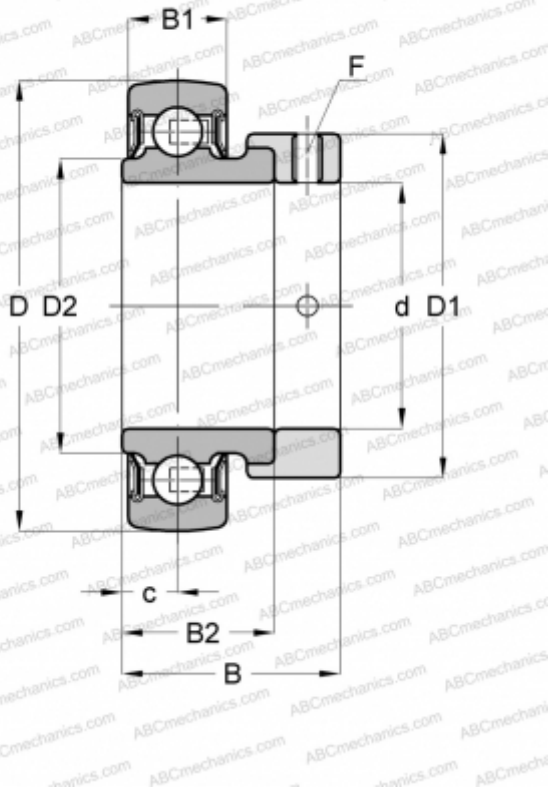


RALE20-NPP-B INA

Insert bearings

TYPE: Ball bearings, Radial insert bearings, With eccentric locking collar, Spherical outer ring, Seals on both side, P seal, without re-relubrication



Technical specification

DIMENSIONS, MM

d	20,000
D	42,000
D1	30,000
D2	25,400
B	24,500
B1	12,000
B2	16,700
c	6,000
F	2.5

MANUFACTURER

[INA](#)

CALCULATION DATA

Basic dynamic load rating, C	9,400 kN
Basic static load rating, Co	5,000 kN
Operating temperature min	-20 °C
Operating temperature max	120 °C

REPLACES

RALE20-XL-NPP-B