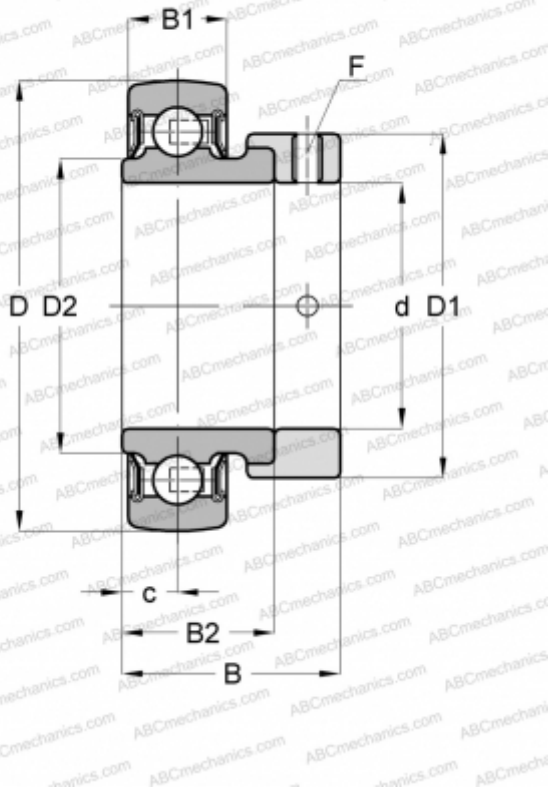


RALE30-NPP-B INA

Insert bearings

TYPE: Ball bearings, Radial insert bearings, With eccentric locking collar, Spherical outer ring, Seals on both side, P seal, without re-relubrication



Technical specification

DIMENSIONS, MM

d	30,000
D	55,000
D1	42,500
D2	35,700
B	26,500
B1	13,000
B2	18,500
c	6,500
F	2.5

MANUFACTURER

[INA](#)

CALCULATION DATA

Basic dynamic load rating, C	13,200 kN
Basic static load rating, Co	8,300 kN
Operating temperature min	-20 °C
Operating temperature max	120 °C

REPLACES

RALE30-XL-NPP-B