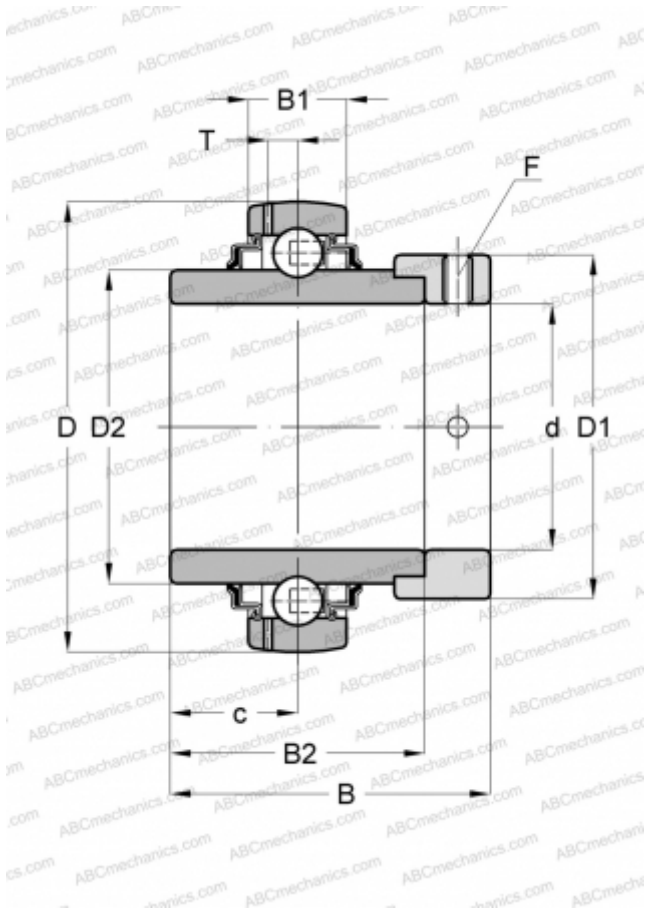


## GE20-KRR-B-FA164 INA

Insert bearings

TYPE: Ball bearings, Radial insert bearings, With eccentric locking collar, Spherical outer ring, Seals on both side, R seal, relubrication, for high temperatures (to +250)



### Technical specification

#### DIMENSIONS, MM

d	20,000
D	47,000
D1	33,000
B	43,700
B1	14,000
B2	34,100
c	17,100
T	4,000
F	3

#### MANUFACTURER

[INA](#)

#### CALCULATION DATA

Basic dynamic load rating, C	12,800 kN
Basic static load rating, Co	6,600 kN
Operating temperature min	150 °C
Operating temperature max	250 °C

#### REPLACES

GE20-XL-KRR-B-FA164