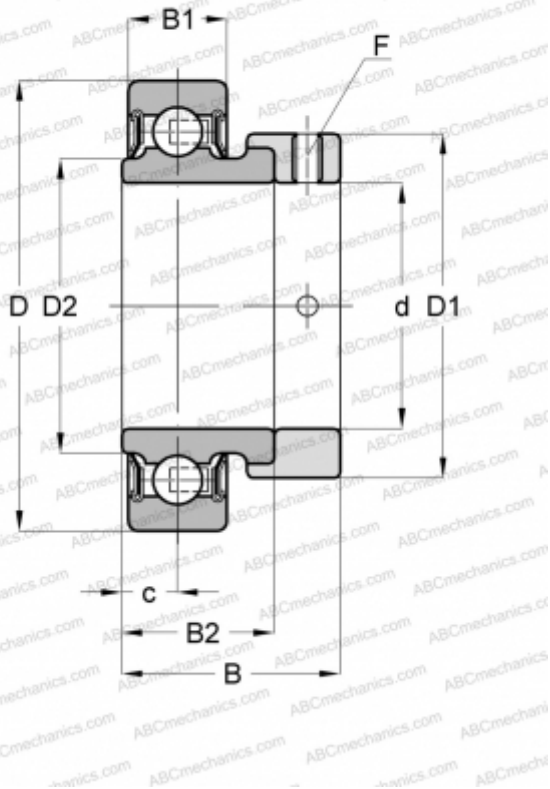


YET 203-008 CW SKF

Insert bearings

TYPE: Ball bearings, Radial insert bearings, With eccentric locking collar, Cylindrical outer ring, Seals on both side, P seal, without re-lubrication, inch size



Technical specification

DIMENSIONS, MM

d	12,700
D	40,000
D1	27,200
D2	24,200
B	28,600
B1	12,000
B2	19,100

MANUFACTURER

[SKF](#)

INTERCHANGE

ABC	KHR 201-8 AE
ASAHI	KHR 201-8 AE

CALCULATION DATA

Basic dynamic load rating, C	9,560 kN
Basic static load rating, Co	4,750 kN
Fatigue load limit, Pu	0,200 kN
Limiting speed	9500 r/min