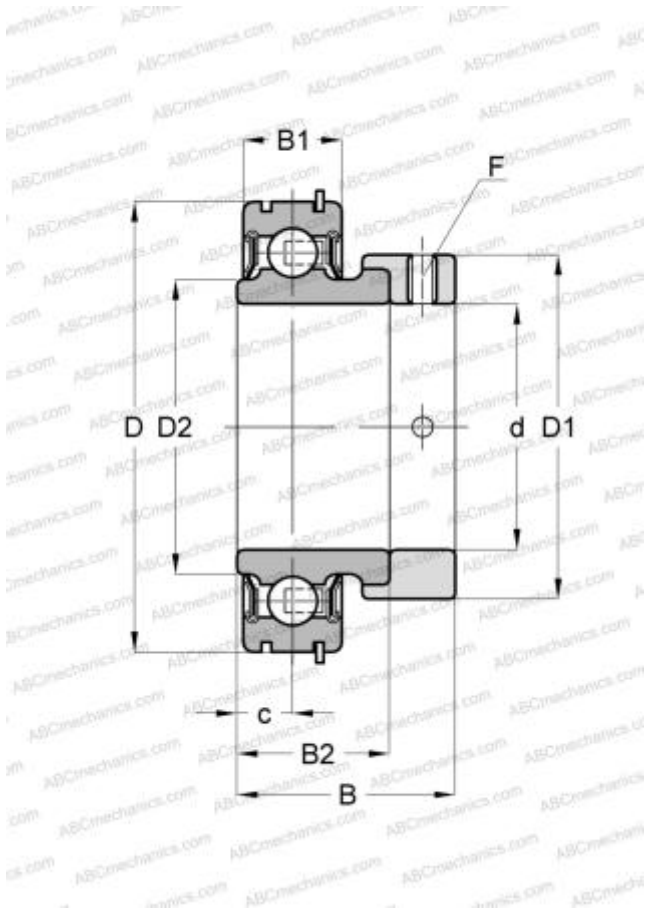


RAE35-NPP-NR INA

Insert bearings

TYPE: Ball bearings, Radial insert bearings, With eccentric locking collar, Cylindrical outer ring, snap ring, Seals on both side, with inner ring extended at one side



Technical specification

DIMENSIONS, MM

d	35,000
D	72,000
D1	51,000
D2	44,600
B	39,000
B1	19,000
B2	25,400
c	9,500
F	5

MANUFACTURER

[INA](#)

INTERCHANGE

ABC	CES207
SNR	CES207

CALCULATION DATA

Basic dynamic load rating, C	25,500 kN
Basic static load rating, Co	15,300 kN
Operating temperature min	-20 °C
Operating temperature max	120 °C

REPLACES

RAE35-XL-NPP-NR