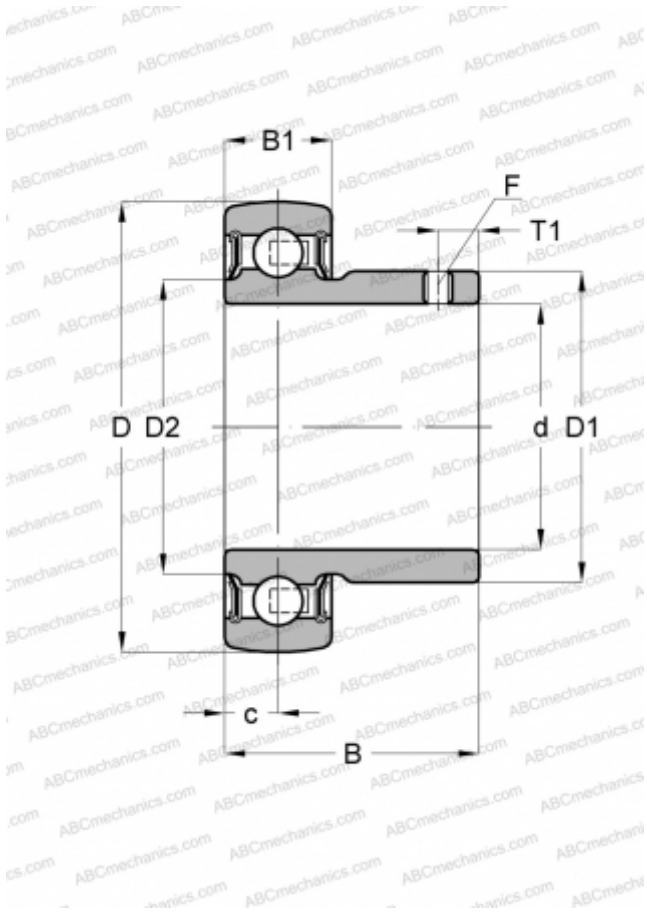


AY25-NPP-B INA

Insert bearings

TYPE: Ball bearings, Radial insert bearings, Grub screw to inner ring, Spherical outer ring, Seals on both side, P seal, without re-lubrication



Technical specification

DIMENSIONS, MM

d	25,000
D	52,000
D1	33,500
D2	30,400
B	27,000
B1	15,000
c	7,500
T1	5,000
F	2.5

MANUFACTURER

[INA](#)

CALCULATION DATA

Basic dynamic load rating, C	14,000 kN
Basic static load rating, Co	7,800 kN
Operating temperature min	-20 °C
Operating temperature max	120 °C

REPLACES

AY25-XL-NPP-B