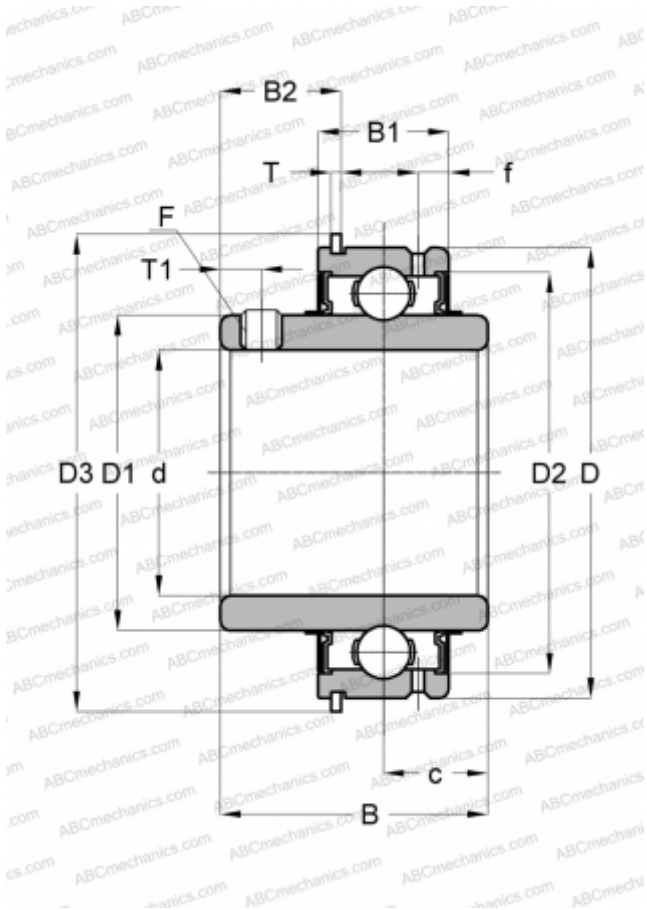


CUC205 SNR

Insert bearings

TYPE: Ball bearings, Radial insert bearings, Grub screw to inner ring, Cylindrical outer ring, snap ring, Seals on both side, relubrication



Technical specification

DIMENSIONS, MM

d	25,000
D	52,000
D1	34,000
B	34,000
B1	17,000
f	4,100
c	14,300
T	1,350
T1	5,000
F	M6 x 1

MANUFACTURER

[SNR](#)

INTERCHANGE

ABC [SER 205](#)

ASAHI [SER 205](#)

CALCULATION DATA

Basic dynamic load rating, C	14,000 kN
Basic static load rating, Co	7,880 kN
Operating temperature min	-20 °C
Operating temperature max	110 °C