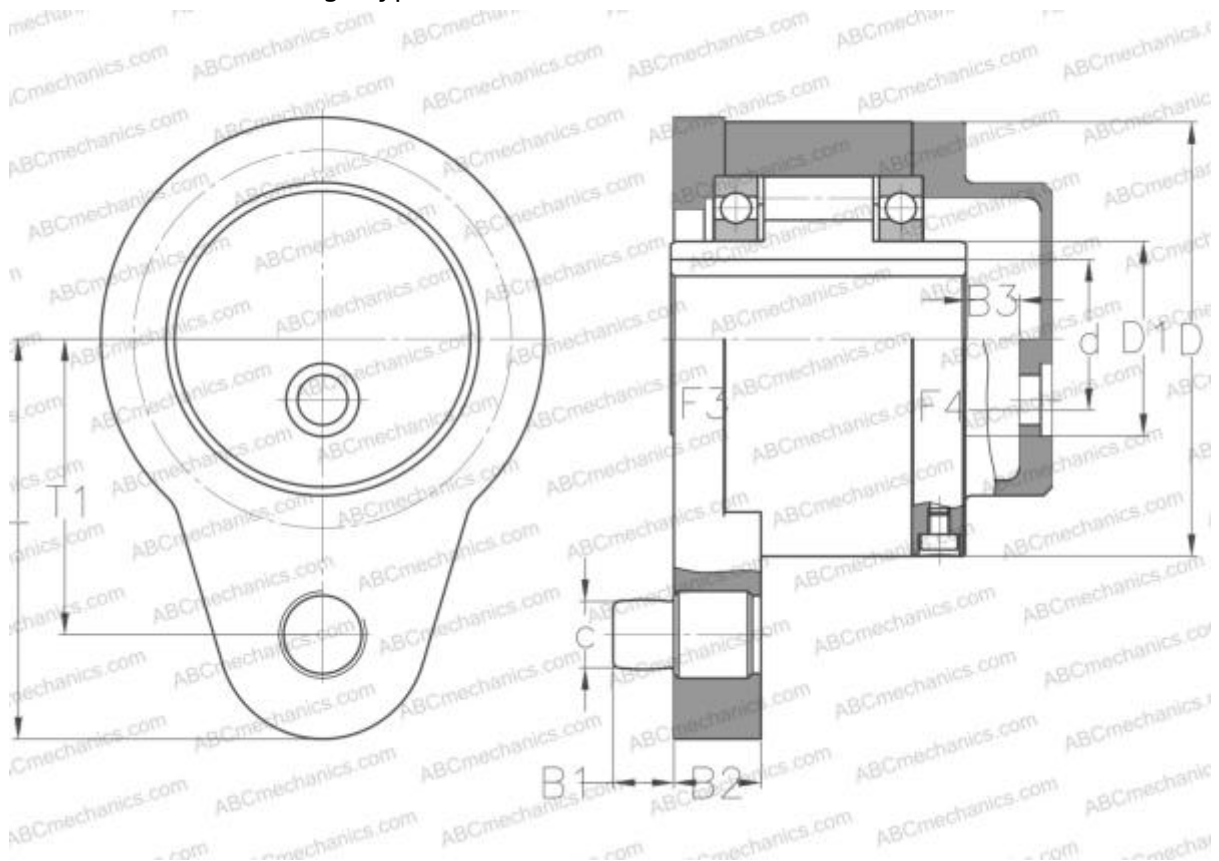


GFR 30 F3F4 STIEBER

Freewheel

TYPE: Freewheel, Self-contained freewheels, Roller type freewheels, using two 160.. series bearings, require oil lubrication, with flange type 3,4



Technical specification

DIMENSIONS, MM

| | |
|----|---------|
| d | 30,000 |
| D | 100,000 |
| D1 | 45,000 |
| B | 95,000 |
| B1 | 14,000 |
| B2 | 18,000 |
| B3 | 10,000 |
| c | 16,000 |
| T | 92,000 |
| T1 | 68,000 |

MANUFACTURER

[STIEBER](#)

INTERCHANGE

ABC [GFR 30 F3F4](#)