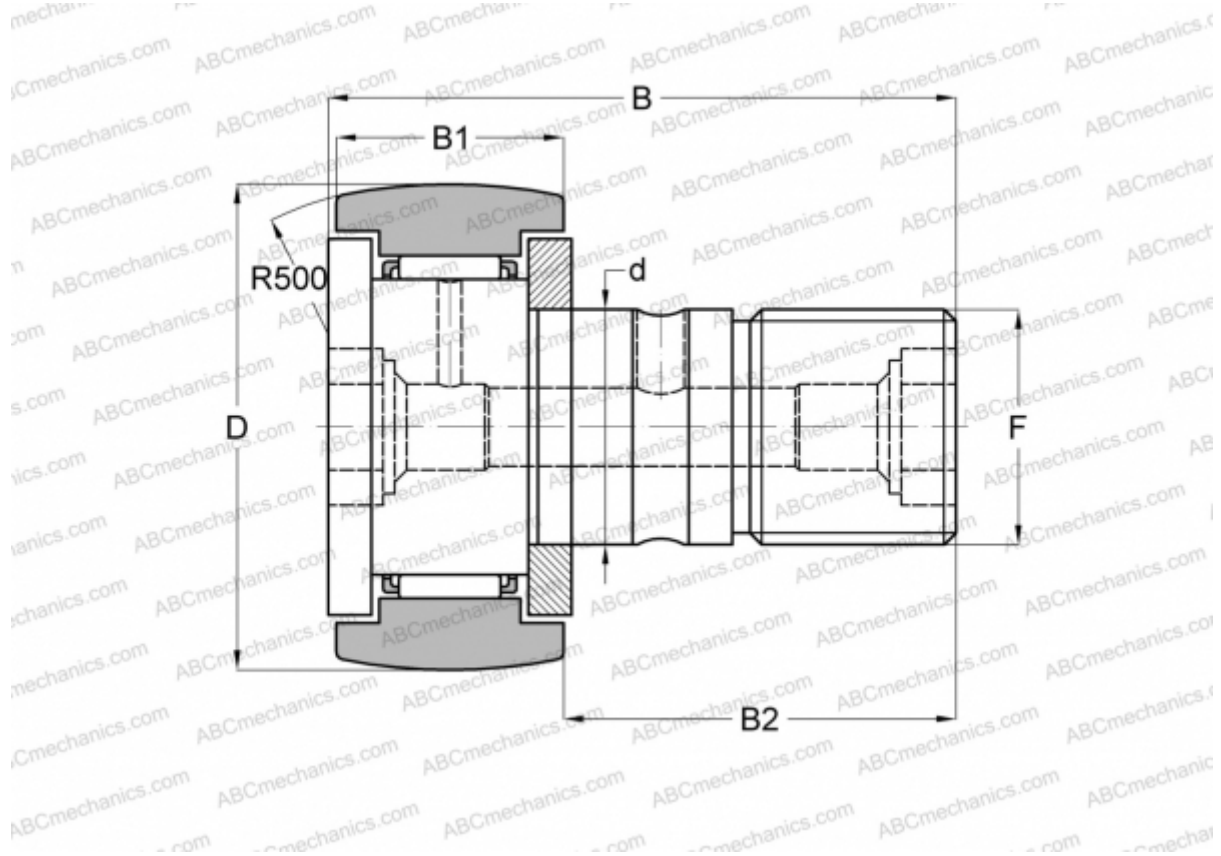


## CF 3 BR IKO

Cam followers

TYPE: Roller bearings, Stud type track rollers, With axial guidance, gap seals on both side, hex hole



### Technical specification

#### DIMENSIONS, MM

d	3,000
D	10,000
B	17,000
B1	7,000
B2	9,000
F	M3x0.5

**MANUFACTURER** [IKO](#)

#### INTERCHANGE

ABC	<a href="#">CF 3 BR</a>
JNS	<a href="#">CF3RA</a>
NTN	<a href="#">KR10T2H/3AS</a>