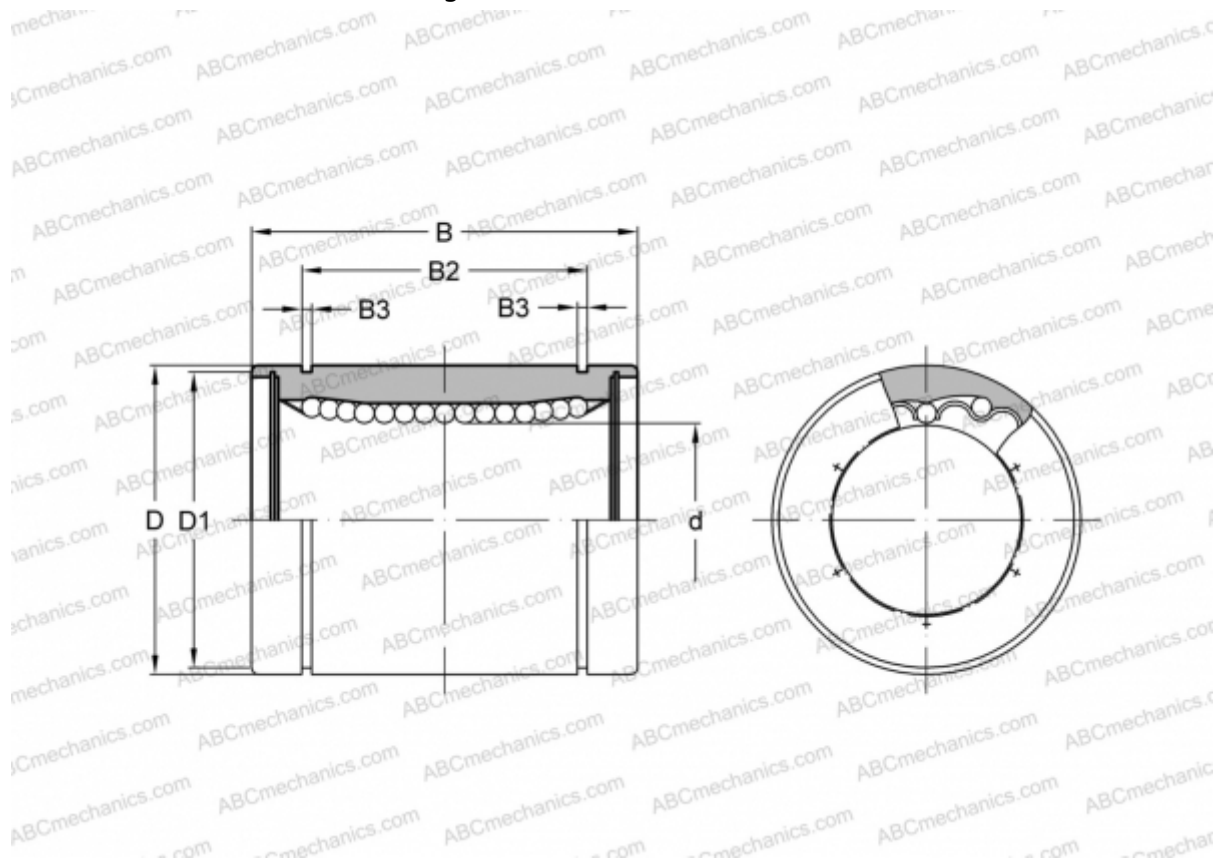


## SMS 16 NB

Linear bushing

TYPE: Shaft guidance systems, Linear bushing, Standard, Close type, Type SM, Asian standard, Corrosion resistance, Stainless steel cage (NB)



### Technical specification

#### DIMENSIONS, MM

d	16,000
D	28,000
B	37,000
D1	27,000
B2	26,500
B3	1,600

**WEIGHT, KG** 0,076

**MANUFACTURER** [NB](#)