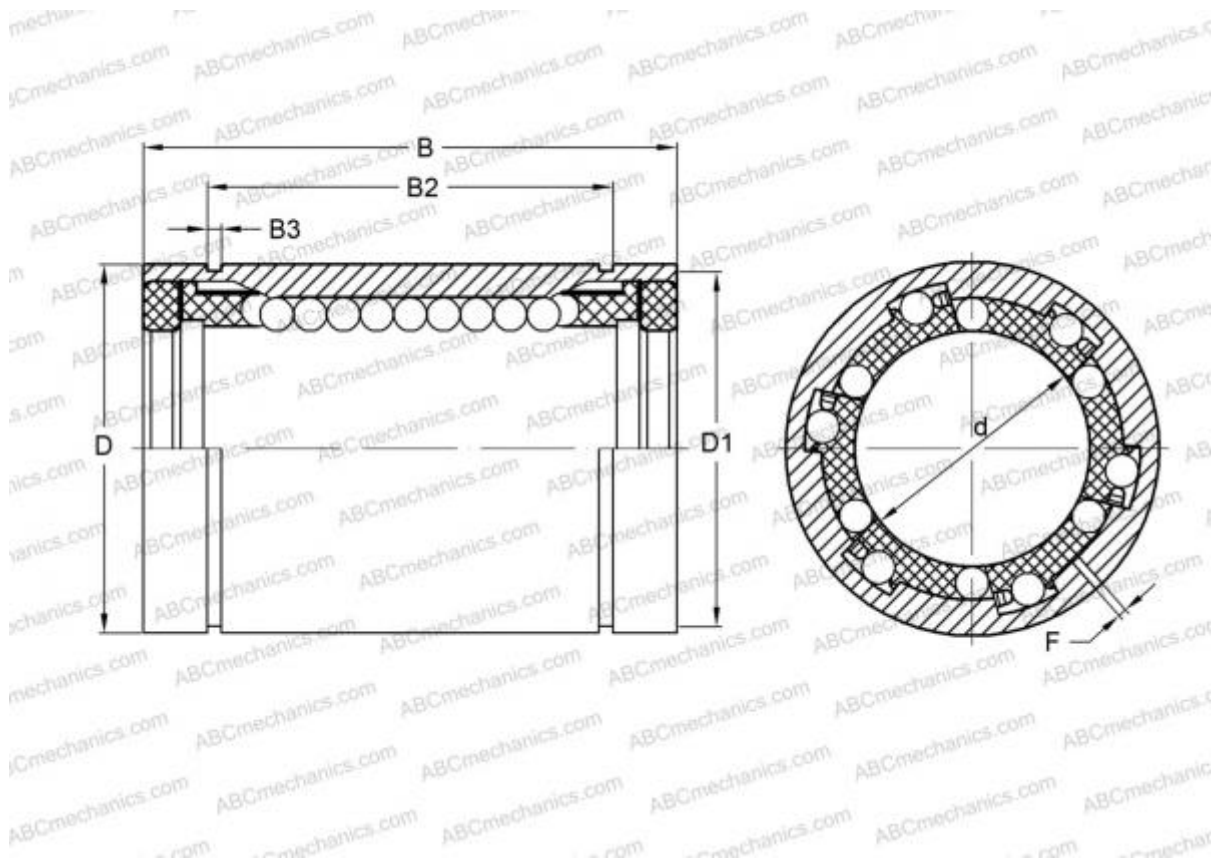


LBE 30 UU AJ IKO

Linear bushing

TYPE: Shaft guidance systems, Linear bushing, Standard, Adjustable type, Type LBE..UU AJ, sealed on both sides



Technical specification

DIMENSIONS, MM

d	30,000
D	47,000
B	68,000
F	2

WEIGHT, KG 0,305

MANUFACTURER [IKO](#)

INTERCHANGE

ABC	LBE 30 UU AJ
STAR	0612-030-10
THOMSON	0612-030-10
INA	KBS30-PP
FAG	LAG 30x47x68.2RS

CALCULATION DATA

Basic dynamic load rating min	1,560 kN
Basic dynamic load rating max	1,650 kN
Basic static load rating min	3,060 kN
Basic static load rating max	3,910 kN