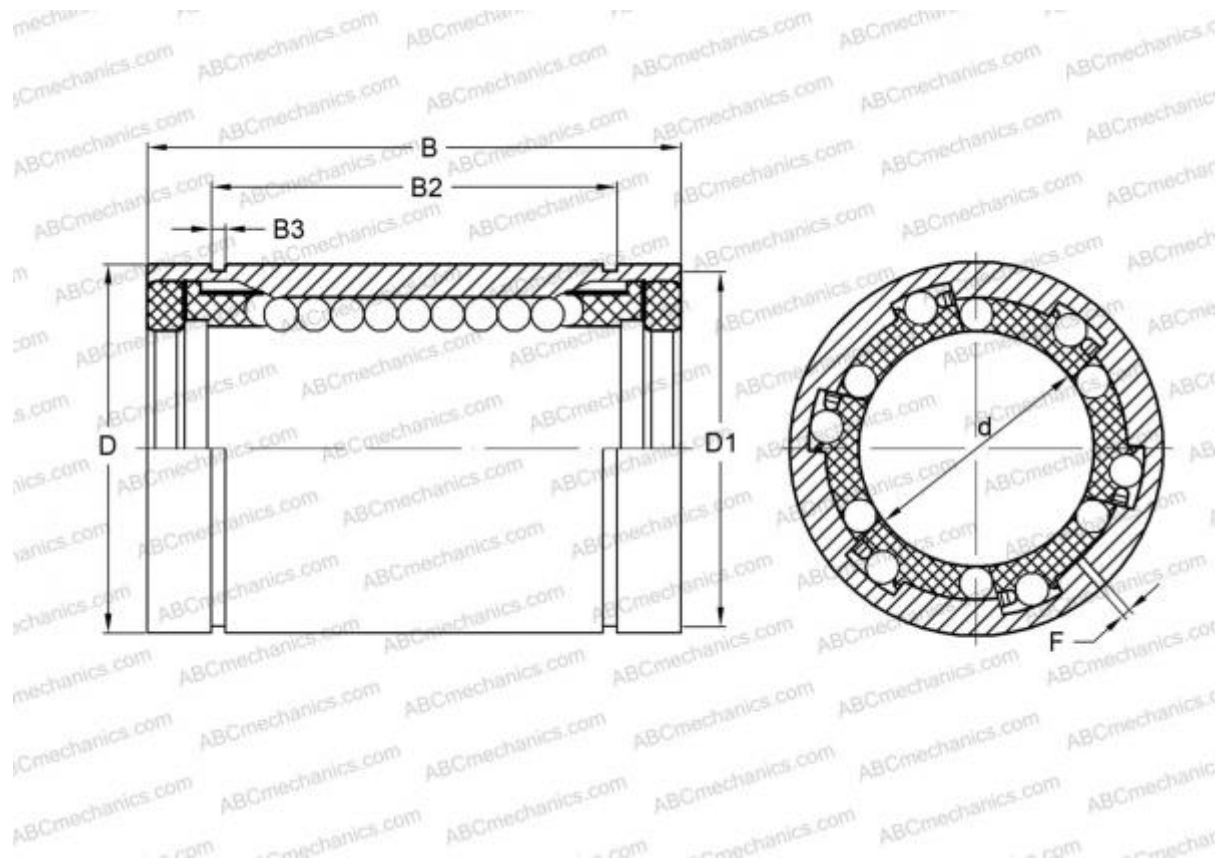


KBS16-PP INA

Linear bushing

TYPE: Shaft guidance systems, Linear bushing, Self aligning, Close type, Type KBS..PP, machined range, sealed on both sides (INA)



Technical specification

DIMENSIONS, MM

d	16,000
D	26,000
B	36,000
D1	24,900
B2	24,600
B3	1,300
F	1

WEIGHT, KG 0,050

MANUFACTURER [INA](#)

REPLACES

KBS 1636 PP