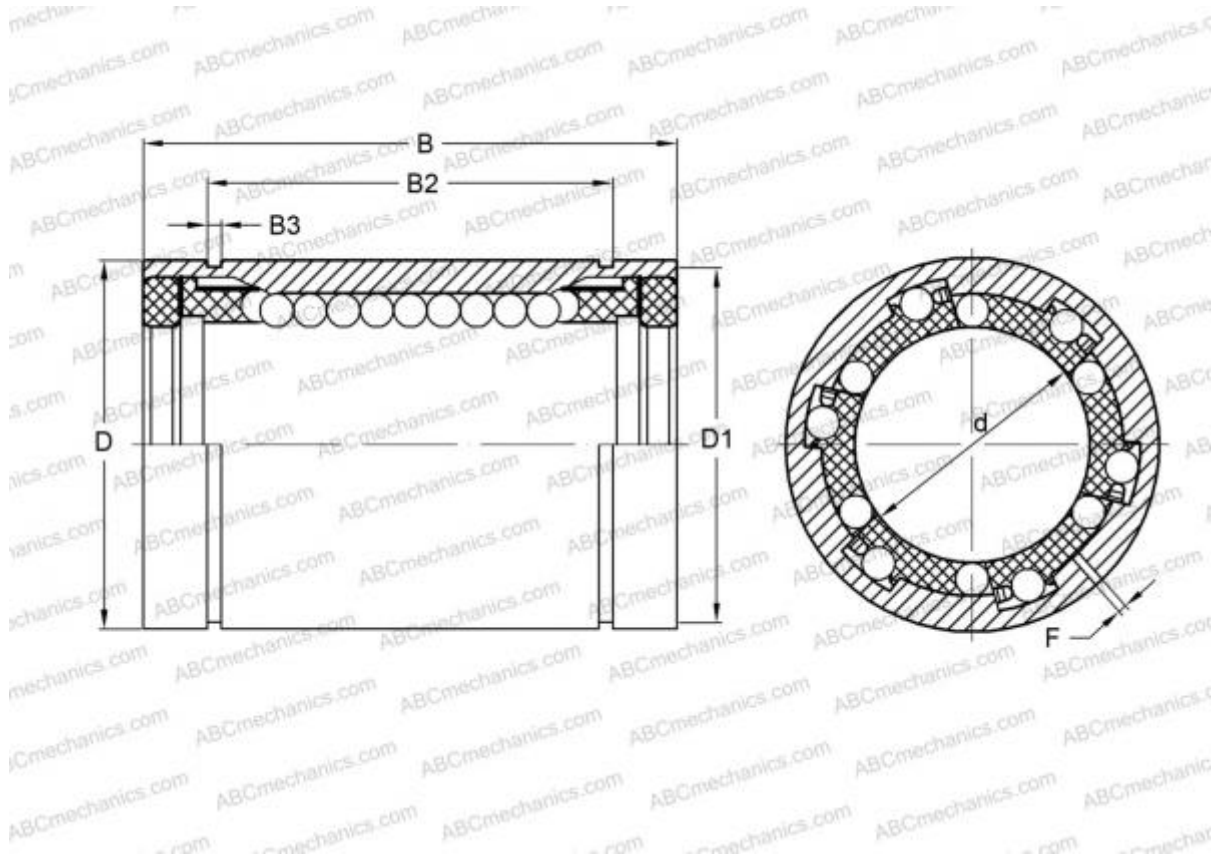


KBS20-PP INA

Linear bushing

TYPE: Shaft guidance systems, Linear bushing, Self aligning, Close type, Type KBS..PP, machined range, sealed on both sides (INA)



Technical specification

DIMENSIONS, MM

d	20,000
D	32,000
B	45,000
D1	30,300
B2	31,200
B3	1,600
F	1

WEIGHT, KG 0,090

MANUFACTURER [INA](#)

REPLACES

KBS 2045 PP