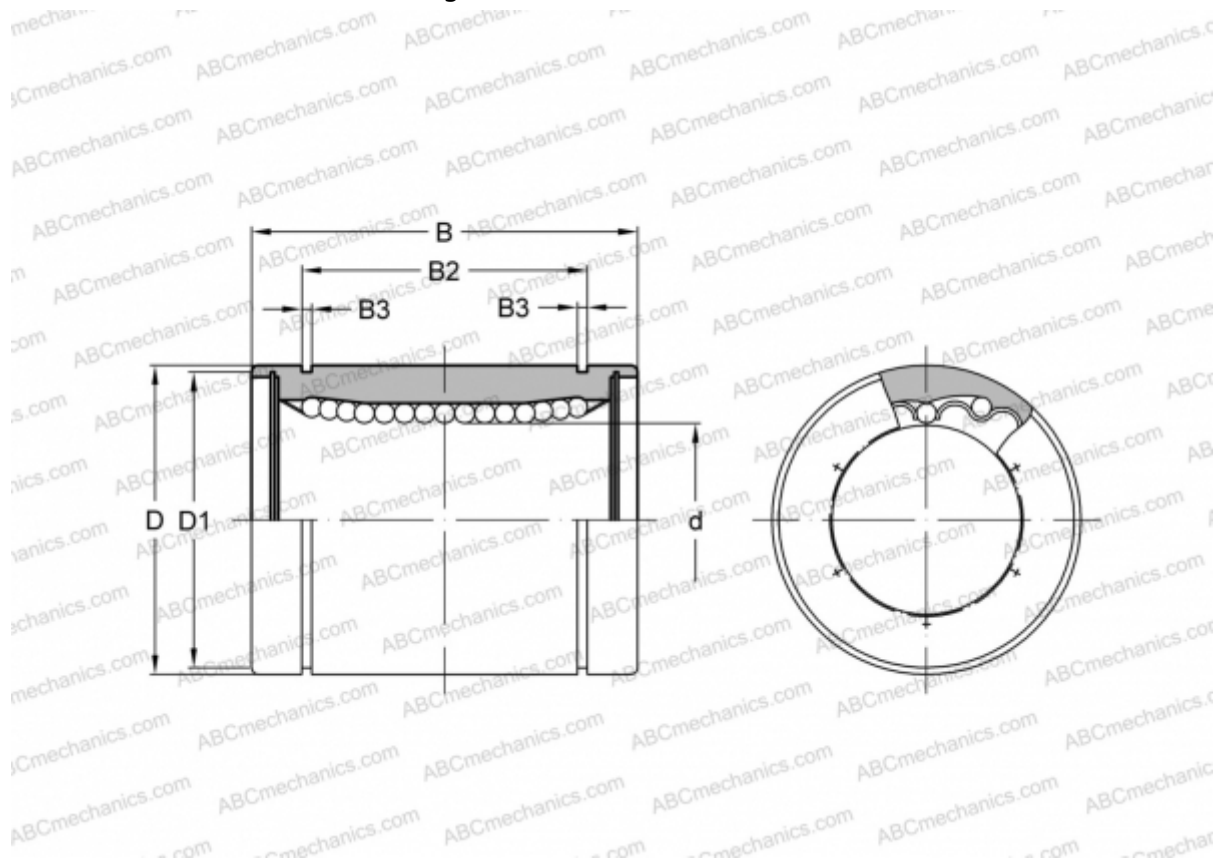


SMS 40 NB

Linear bushing

TYPE: Shaft guidance systems, Linear bushing, Standard, Close type, Type SM, Asian standard, Corrosion resistance, Stainless steel cage (NB)



Technical specification

DIMENSIONS, MM

d	40,000
D	60,000
B	80,000
D1	57,000
B2	60,500
B3	2,100

WEIGHT, KG 0,654

MANUFACTURER [NB](#)