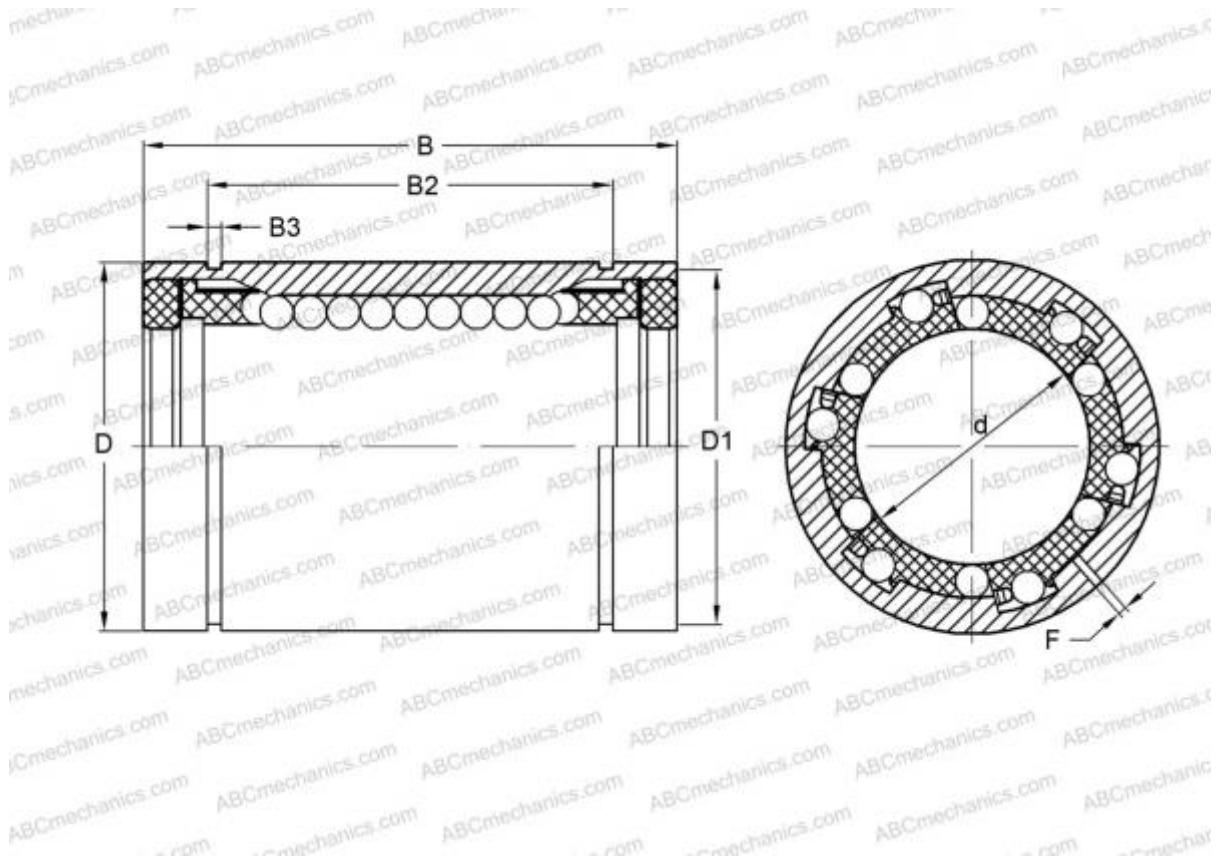


LBB 10 UU AJ IKO

Linear bushing

TYPE: Shaft guidance systems, Linear bushing, Standard, Adjustable type, Type LBB..UU AJ, sealed on both sides, inch



Technical specification

DIMENSIONS, MM

d	15,875
D	28,575
B	38,100
f	2,381

WEIGHT, KG 0,064

MANUFACTURER [IKO](#)

INTERCHANGE

ABC	LBB 10 UU AJ
HEIM	ADJ-625 PP

CALCULATION DATA

Basic dynamic load rating min	0,424 kN
Basic dynamic load rating max	0,488 kN
Basic static load rating min	0,766 kN

CALCULATION DATA

Basic static load rating max	1,080 kN
------------------------------	----------