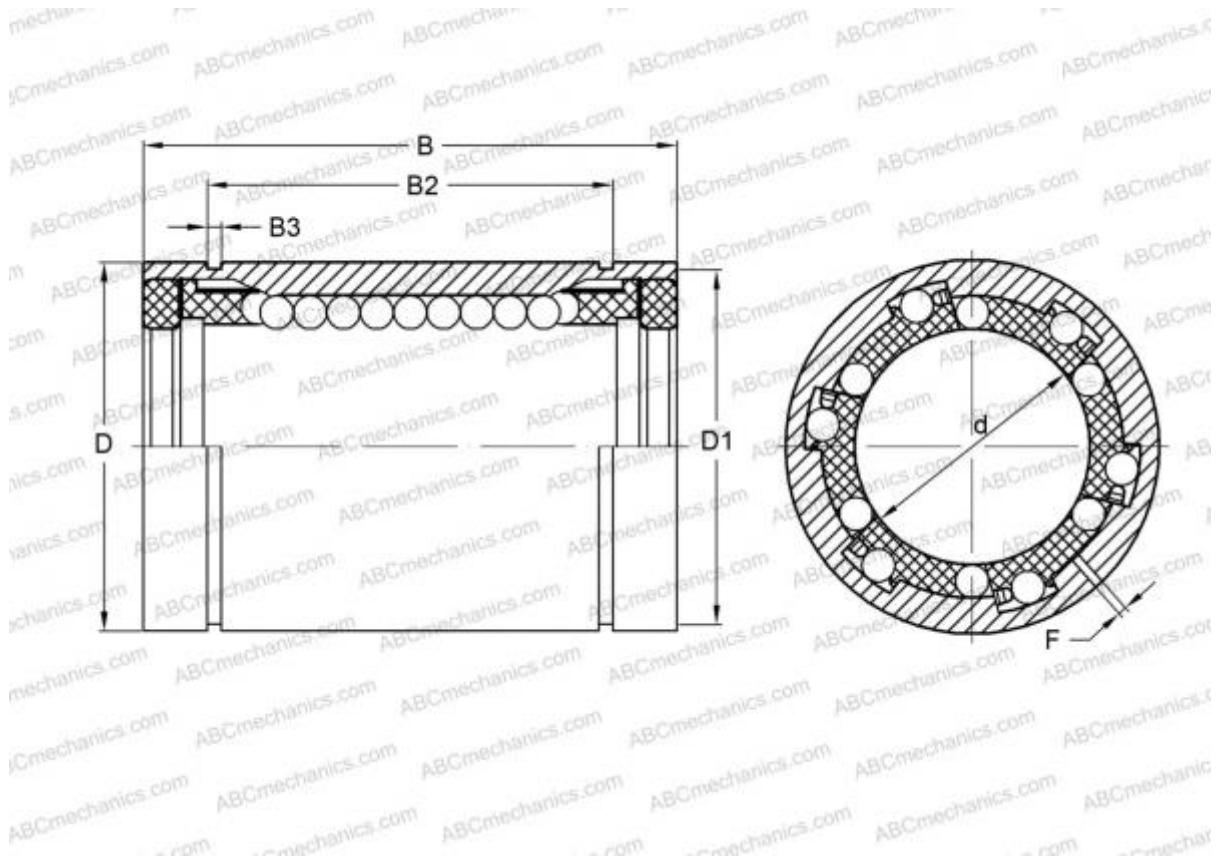


LBB 12 UU AJ IKO

Linear bushing

TYPE: Shaft guidance systems, Linear bushing, Standard, Adjustable type, Type LBB..UU AJ, sealed on both sides, inch



Technical specification

DIMENSIONS, MM

d	19,050
D	31,750
B	41,275
f	2,381

WEIGHT, KG 0,079

MANUFACTURER [IKO](#)

INTERCHANGE

ABC	LBB 12 UU AJ
HEIM	ADJ-750 PP

CALCULATION DATA

Basic dynamic load rating min	0,608 kN
Basic dynamic load rating max	0,724 kN
Basic static load rating min	1,150 kN

CALCULATION DATA

Basic static load rating max	1,680 kN
------------------------------	----------