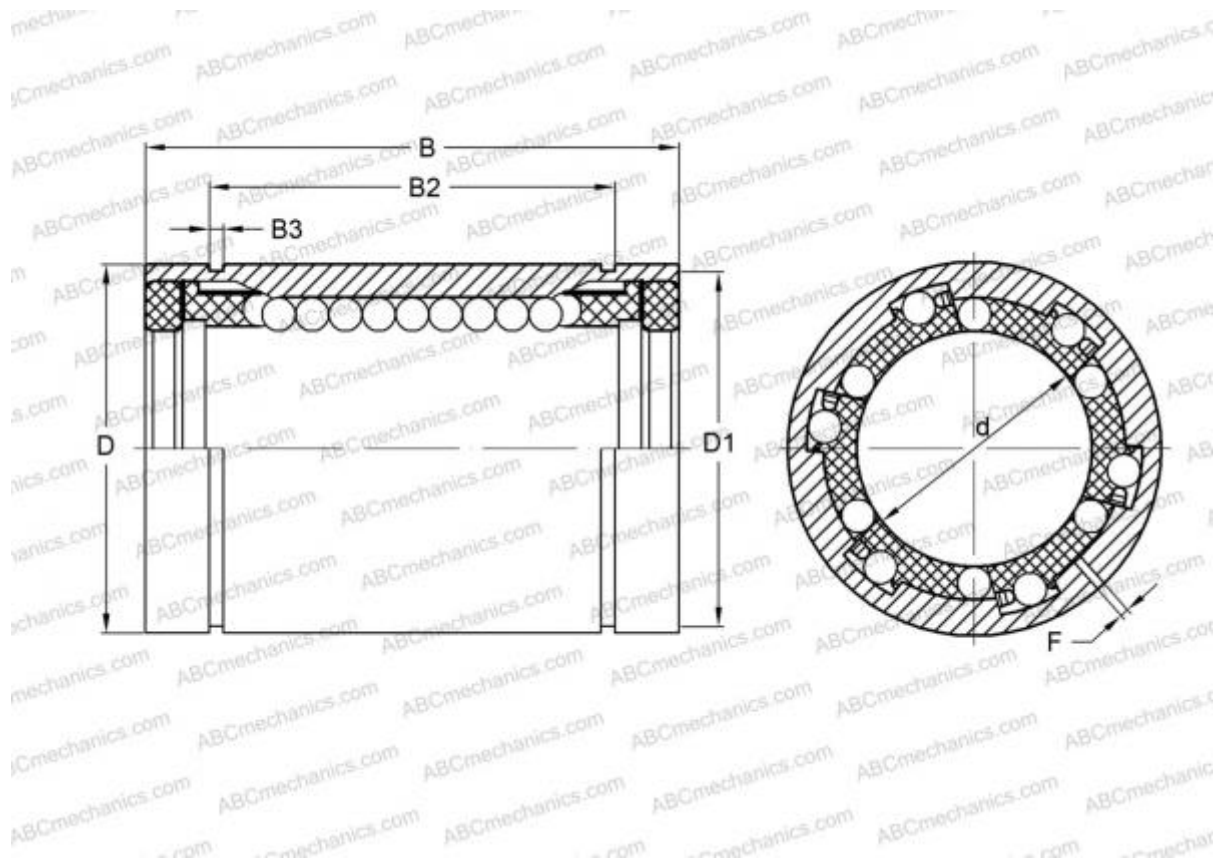


LBB 24 UU AJ IKO

Linear bushing

TYPE: Shaft guidance systems, Linear bushing, Standard, Adjustable type, Type LBB..UU AJ, sealed on both sides, inch



Technical specification

DIMENSIONS, MM

d	38,100
D	60,325
B	76,200
f	3,175

WEIGHT, KG 0,530

MANUFACTURER [IKO](#)

INTERCHANGE

ABC	LBB 24 UU AJ
HEIM	ADJ-1500 PP

CALCULATION DATA

Basic dynamic load rating min	2,460 kN
Basic dynamic load rating max	2,610 kN
Basic static load rating min	4,330 kN

CALCULATION DATA

Basic static load rating max	5,540 kN
------------------------------	----------