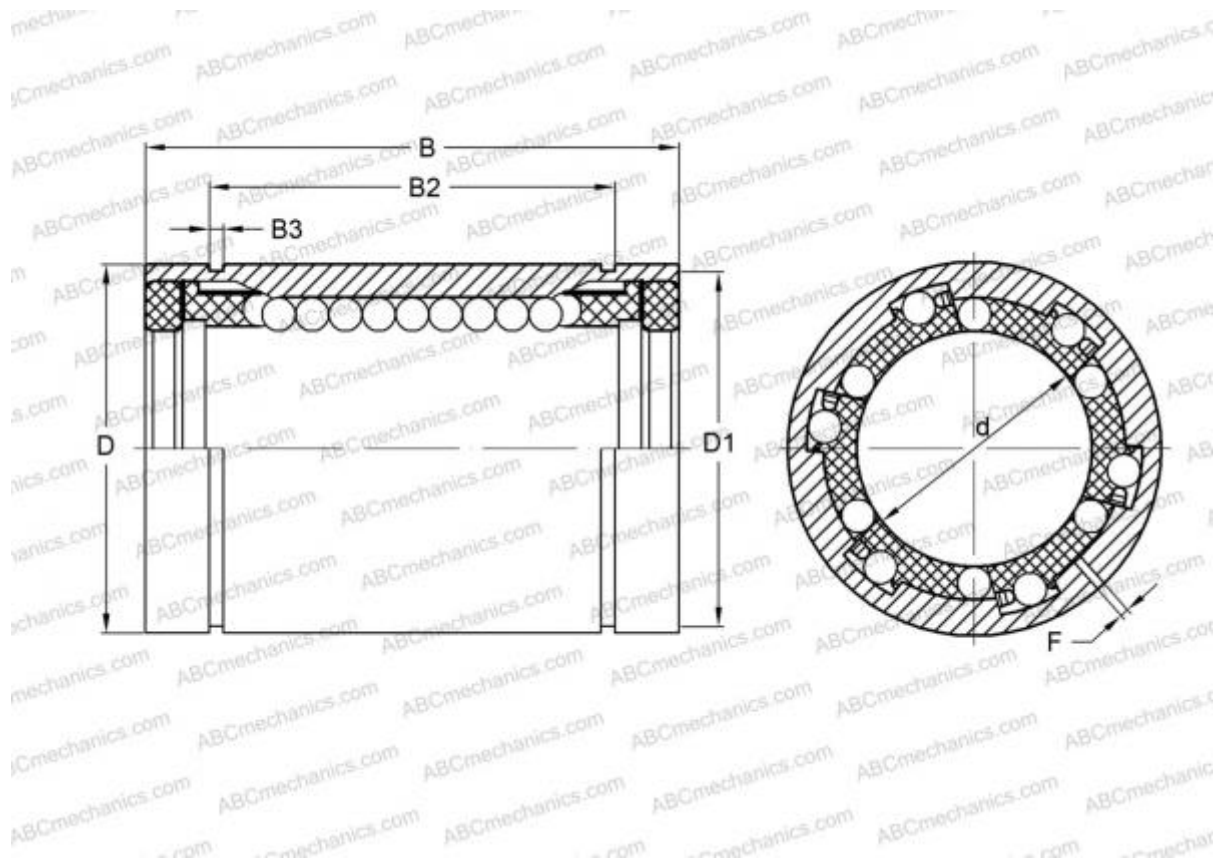


LBD 10 UU AJ IKO

Linear bushing

TYPE: Shaft guidance systems, Linear bushing, Standard, Adjustable type, Type LBD..UU AJ, sealed on both sides



Technical specification

DIMENSIONS, MM

d	10,000
D	19,000
B	29,000
f	1,500

WEIGHT, KG 0,026

MANUFACTURER [IKO](#)

INTERCHANGE

ABC	LBD 10 UU AJ
-----	------------------------------

CALCULATION DATA

Basic dynamic load rating min	0,197 kN
Basic dynamic load rating max	0,226 kN
Basic static load rating min	0,405 kN
Basic static load rating max	0,573 kN