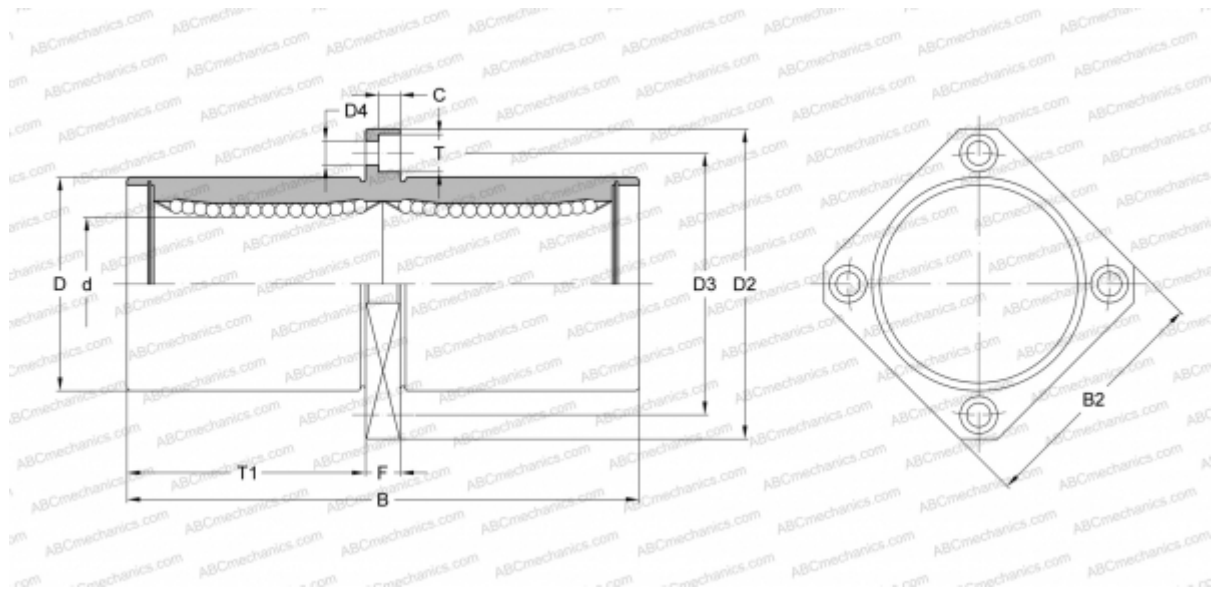


SMSKC 40G NB

Linear bushing

TYPE: Shaft guidance systems, Linear bushing, Middle flange location, Square type, Type SMKC, Asian standard, Corrosion resistance, Plastic cage (NB)



Technical specification

DIMENSIONS, MM

d	40,000
D	60,000
B	151,000
D2	96,000
D3	78,000
D4	9,000
B2	75,000
T	14,000
T1	69,000
C	8,100
F	13

WEIGHT, KG 1,380

MANUFACTURER [NB](#)