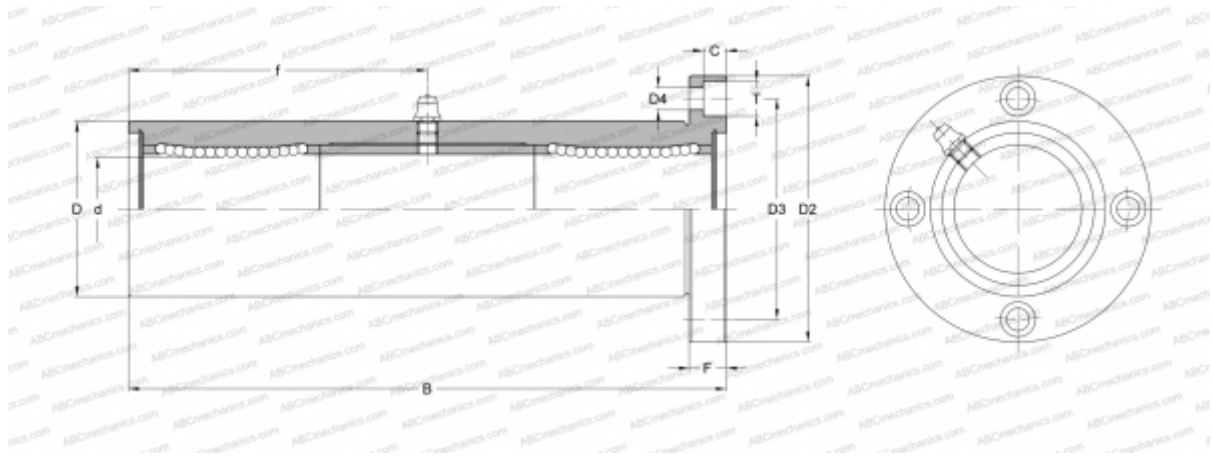


TRF 6GUU NB

Linear bushing

TYPE: Shaft guidance systems, Linear bushing, With flange, Circular type, three length, Type TRF, Asian standard, Plastic cage (NB)



Technical specification

DIMENSIONS, MM

d	6,000
D	15,000
B	51,000
D2	32,000
D3	24,000
D4	3,500
T	6,000
C	3,100
F	5

WEIGHT, KG 0,066

MANUFACTURER [NB](#)