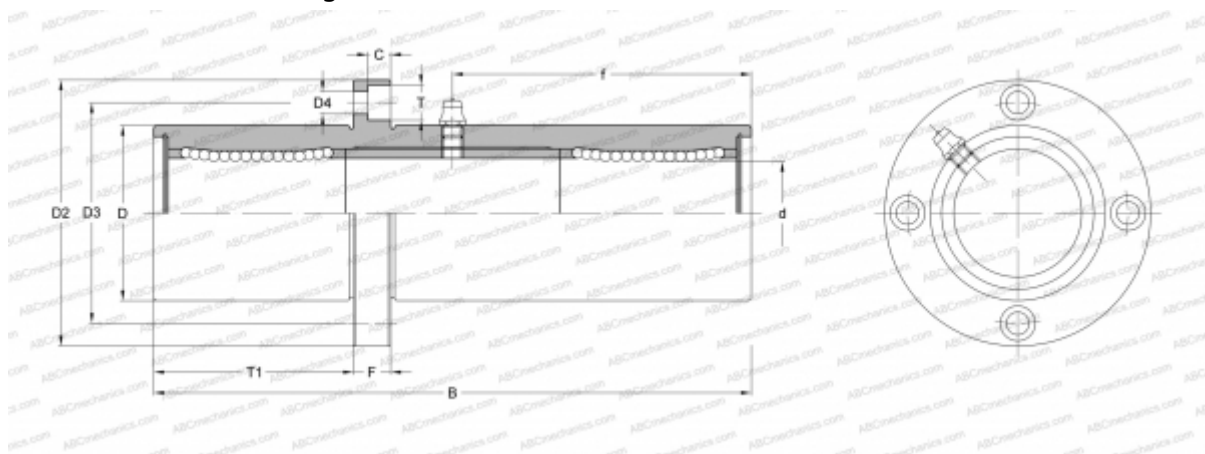




TRFC 12UU NB

Linear bushing

TYPE: Shaft guidance systems, Linear bushing, Pilot flange location, Circular type, three length, Type TRFC, Asian standard, Steel cage (NB)



Technical specification

DIMENSIONS, MM

| | |
|----|--------|
| d | 12,000 |
| D | 26,000 |
| B | 84,000 |
| D2 | 46,000 |
| D3 | 36,000 |
| D4 | 4,500 |
| T | 7,500 |
| T1 | 28,000 |
| f | 41,000 |
| C | 4,100 |
| F | 6 |

WEIGHT, KG 0,248

MANUFACTURER [NB](#)

