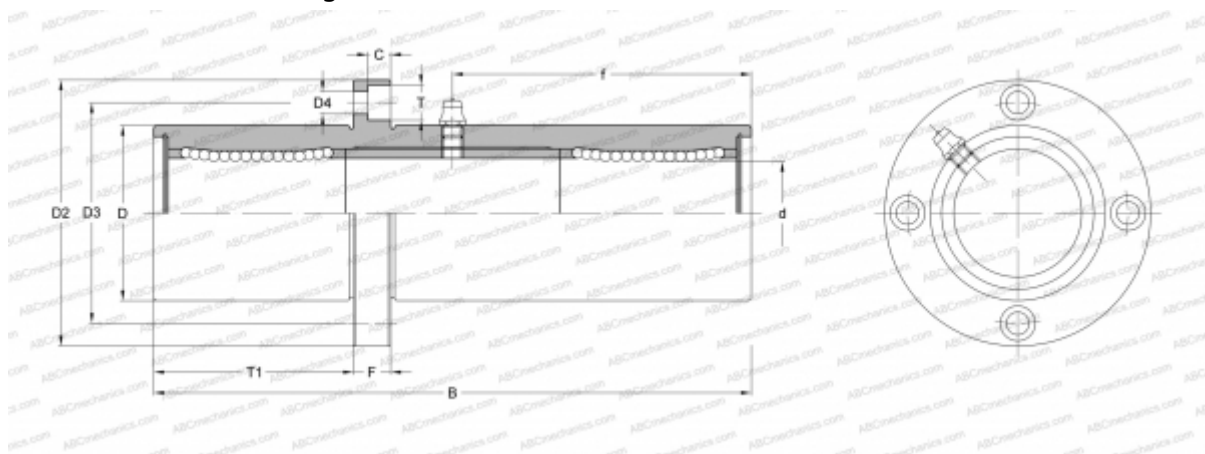




TRFC 30UU NB

Linear bushing

TYPE: Shaft guidance systems, Linear bushing, Pilot flange location, Circular type, three length, Type TRFC, Asian standard, Steel cage (NB)



Technical specification

DIMENSIONS, MM

d	30,000
D	52,000
B	182,000
D2	82,000
D3	67,000
D4	6,600
T	11,000
T1	61,000
f	91,000
C	6,100
F	10

WEIGHT, KG 1,636

MANUFACTURER [NB](#)

