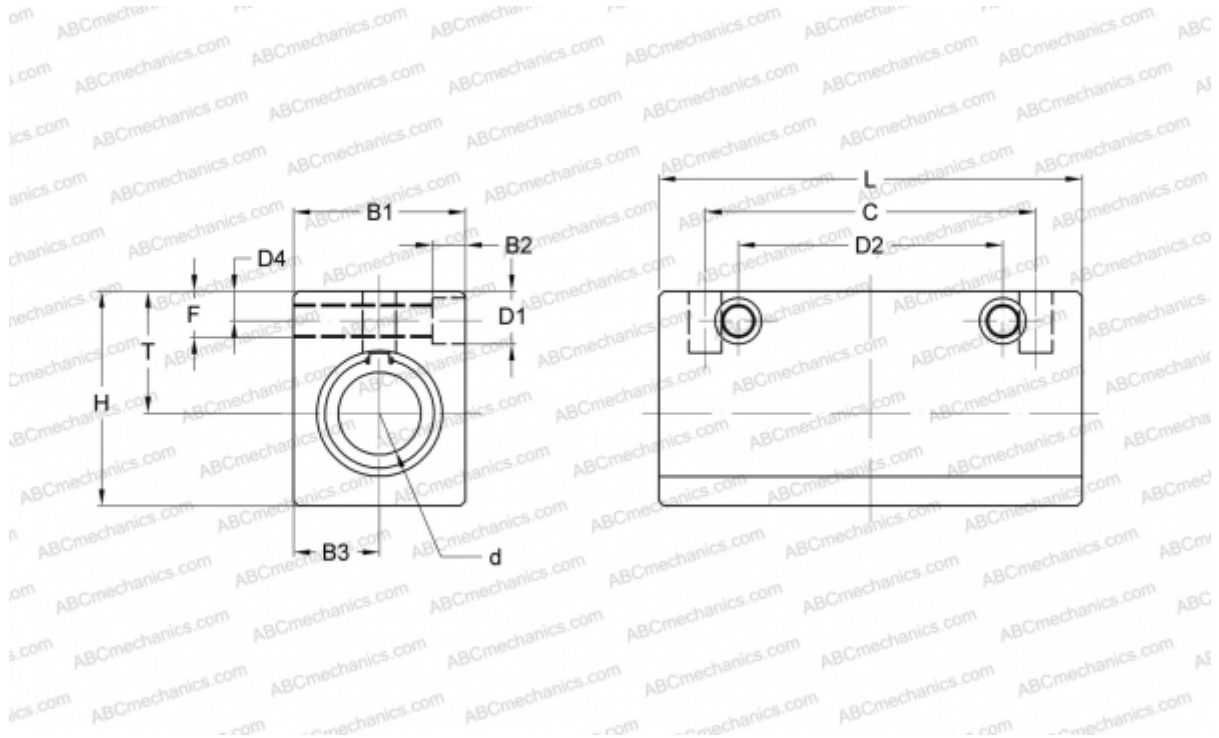


AK 12GWUU NB

Linear bushing, case unit

TYPE: Shaft guidance systems, Linear bushing, case unit, Close type, Double-wide block type, Type AK..W, compact (NB)



Technical specification

DIMENSIONS, MM

B1	28,000
H	34,000
L	70,000
d	12,000
D1	8,000
D2	50,000
D4	6,000
B2	6,000
B3	14,000
T	20,000
C	36,000
c	50
F	9.5

WEIGHT, KG 0,168

MANUFACTURER [NB](#)