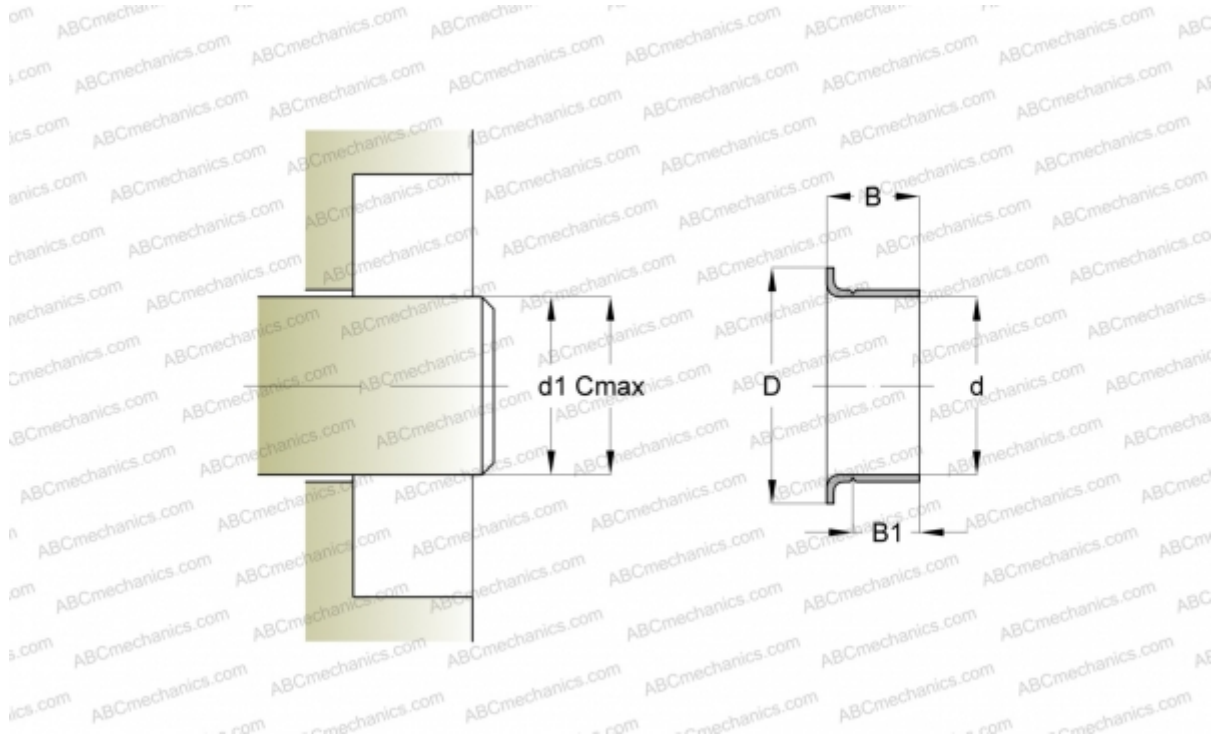


## CR 99810 CR

Wear sleeves

TYPE: Wear sleeves, SKF Speedi-Sleeve, Speedi-Sleeve Gold, for heavy industrial applications (SKF)



### Technical specification

#### DIMENSIONS, MM

d1	15,820
d	15,880
D	19,050
B	10,310
B1	7,950
C	15,930

**MANUFACTURER** [CR](#)

#### INTERCHANGE

SKF [99810](#)

#### CALCULATION DATA

Maximum shaft surface speed 0,001 m/s