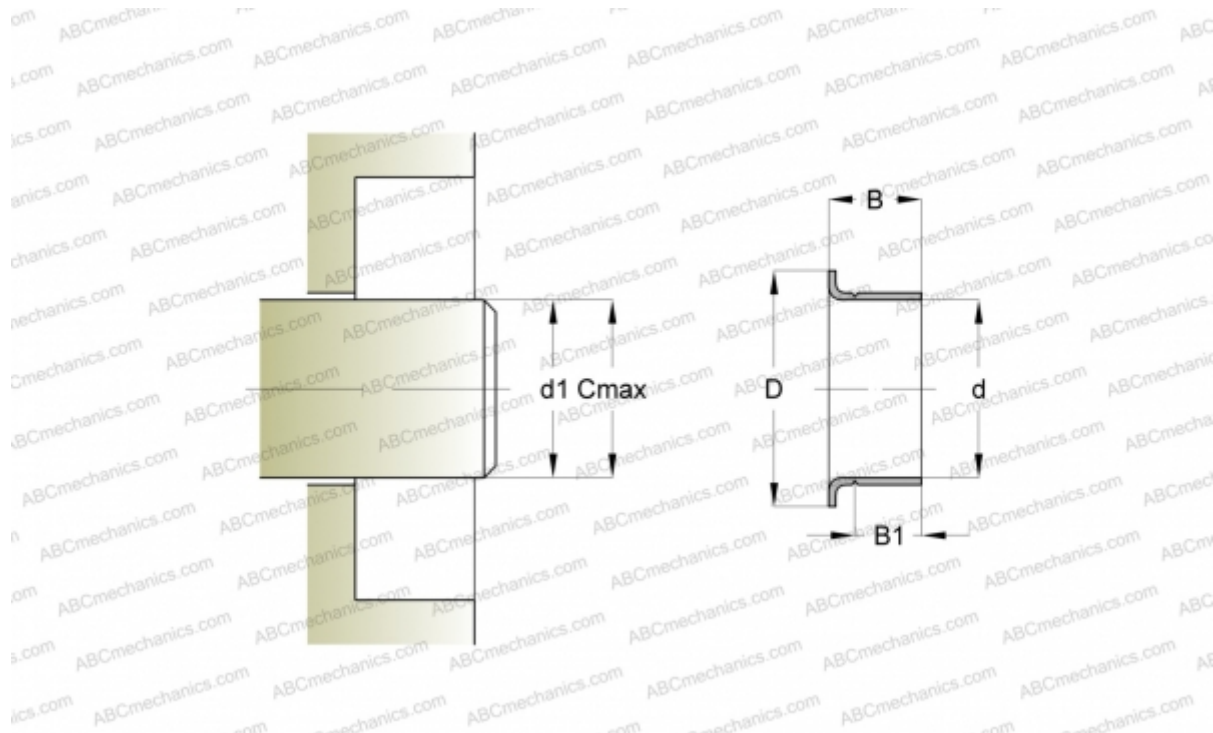




## CR 99811 CR

Wear sleeves

TYPE: Wear sleeves, SKF Speedi-Sleeve, Speedi-Sleeve Gold, for heavy industrial applications (SKF)



### Technical specification

#### DIMENSIONS, MM

d1	19,000
d	19,050
D	24,000
B	11,130
B1	7,950
C	19,100

MANUFACTURER [CR](#)

#### INTERCHANGE

SKF	<a href="#">99811</a>
-----	-----------------------

#### CALCULATION DATA

Maximum shaft surface speed	0,001 m/s
-----------------------------	-----------

