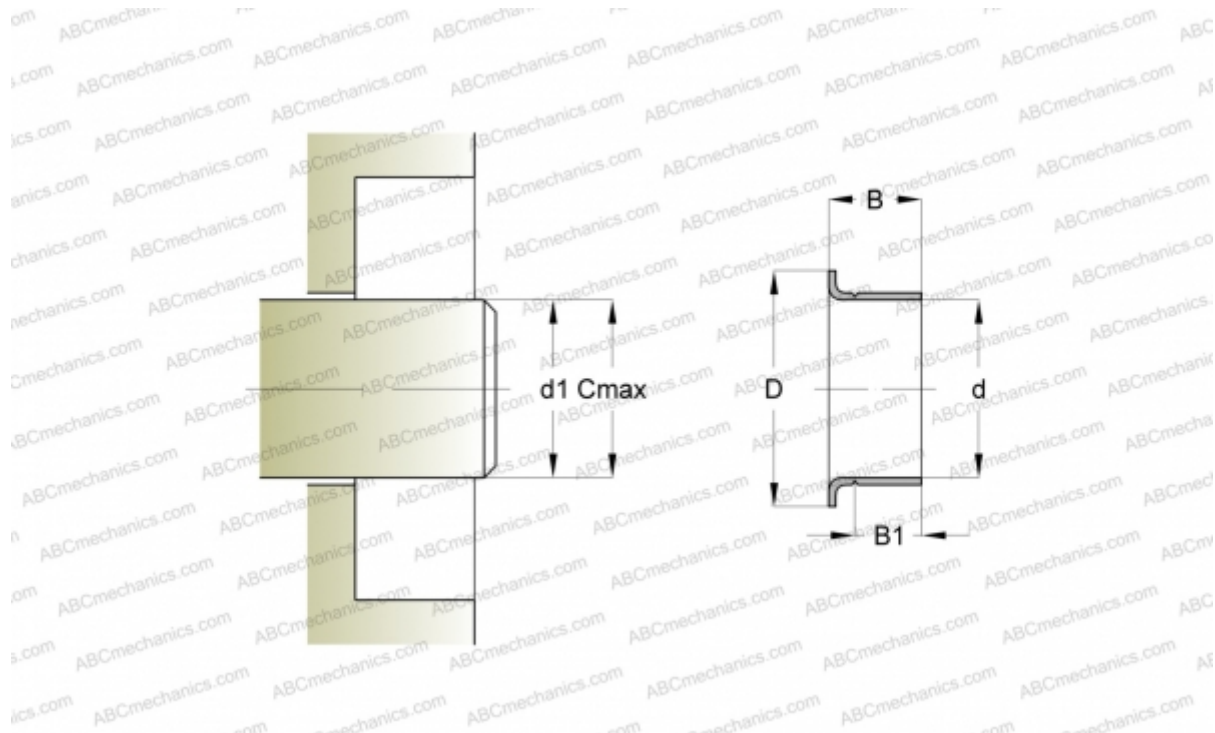




CR 99817 CR

Wear sleeves

TYPE: Wear sleeves, SKF Speedi-Sleeve, Speedi-Sleeve Gold, for heavy industrial applications (SKF)



Technical specification

DIMENSIONS, MM

d1	31,670
d	31,750
D	38,100
B	11,130
B1	7,950
C	31,830

MANUFACTURER [CR](#)

INTERCHANGE

SKF	99817
-----	-----------------------

CALCULATION DATA

Maximum shaft surface speed	0,001 m/s
-----------------------------	-----------

