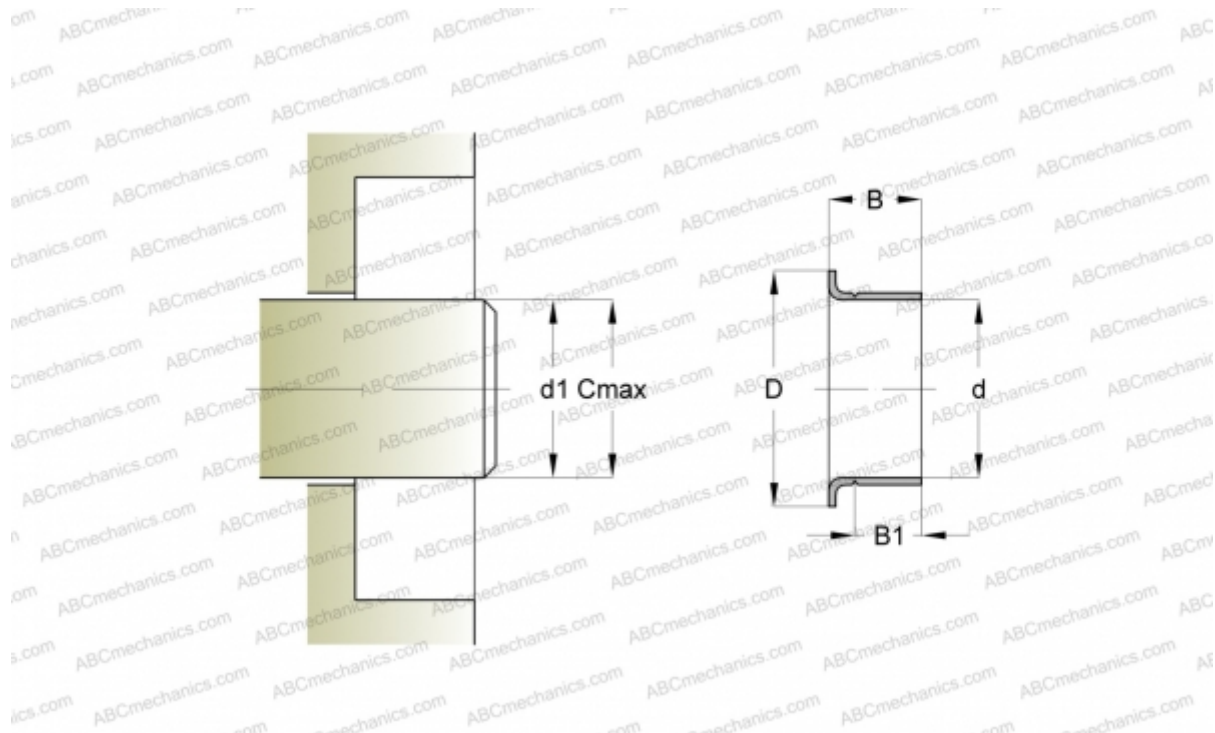




99823 SKF

Wear sleeves

TYPE: Wear sleeves, SKF Speedi-Sleeve, Speedi-Sleeve Gold, for heavy industrial applications (SKF)



Technical specification

DIMENSIONS, MM

d1	38,020
d	38,100
D	45,240
B	12,700
B1	9,530
C	38,180

MANUFACTURER

[SKF](#)

INTERCHANGE

CR	CR 99823
----	--------------------------

CALCULATION DATA

Maximum shaft surface speed	0,001 m/s
-----------------------------	-----------

