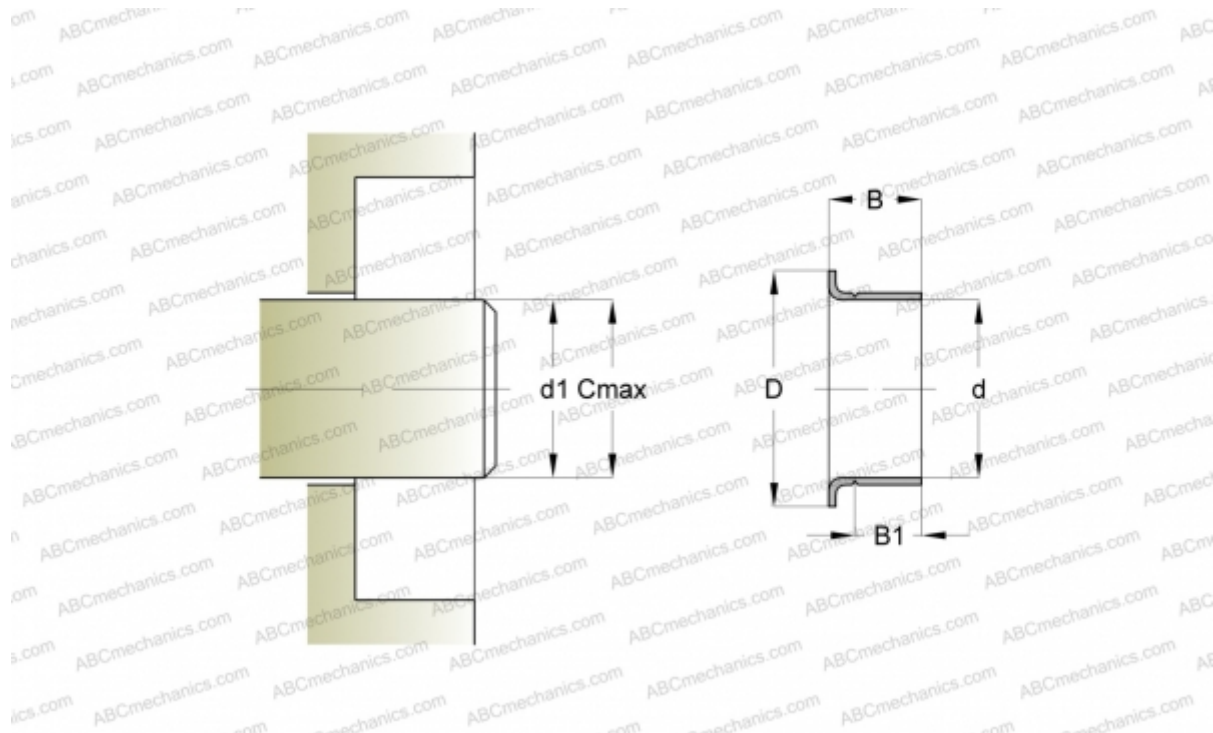




99873 SKF

Wear sleeves

TYPE: Wear sleeves, SKF Speedi-Sleeve, Speedi-Sleeve Gold, for heavy industrial applications (SKF)



Technical specification

DIMENSIONS, MM

d1	41,830
d	42,010
D	53,010
B	17,500
B1	14,300
C	42,010

MANUFACTURER

[SKF](#)

INTERCHANGE

CR	CR 99873
----	--------------------------

CALCULATION DATA

Maximum shaft surface speed	0,001 m/s
-----------------------------	-----------

