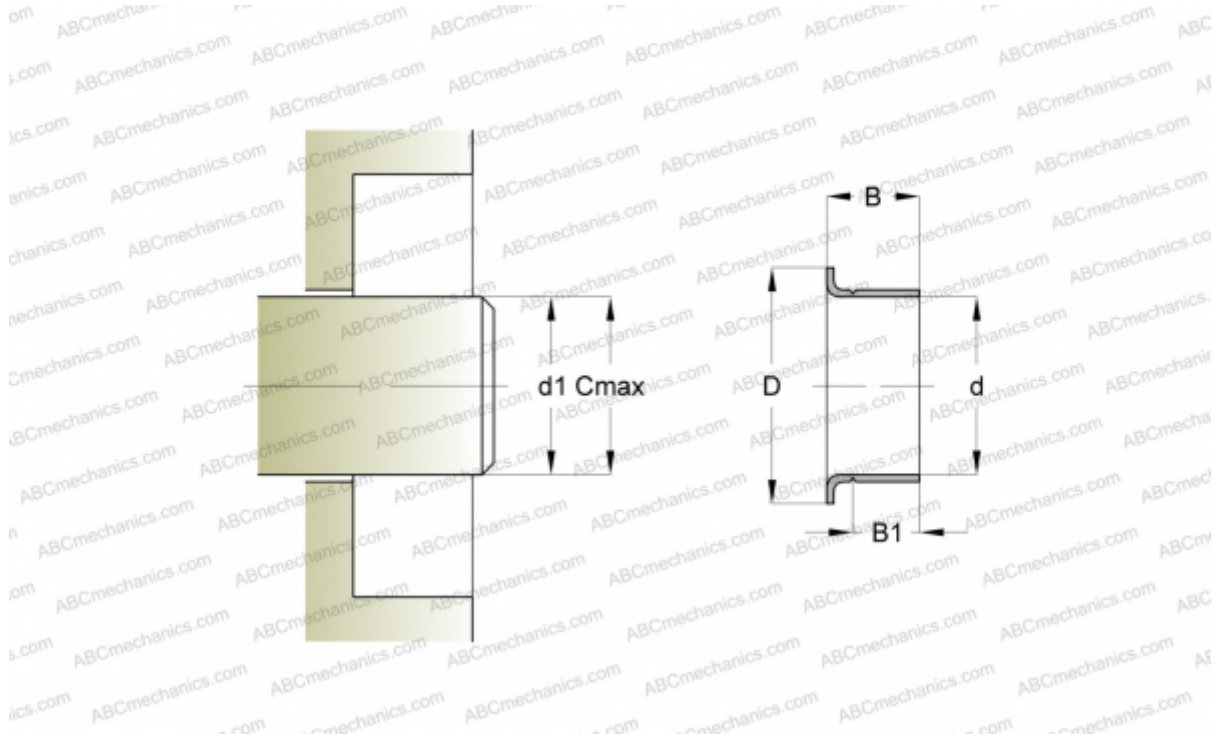


## CR 99842 CR

Wear sleeves

TYPE: Wear sleeves, SKF Speedi-Sleeve, Speedi-Sleeve Gold, for heavy industrial applications (SKF)



### Technical specification

#### DIMENSIONS, MM

d1	66,680
d	66,680
D	77,390
B	23,830
B1	19,840
C	66,830

**MANUFACTURER** [CR](#)

#### INTERCHANGE

SKF [99842](#)

#### CALCULATION DATA

Maximum shaft surface speed 0,001 m/s