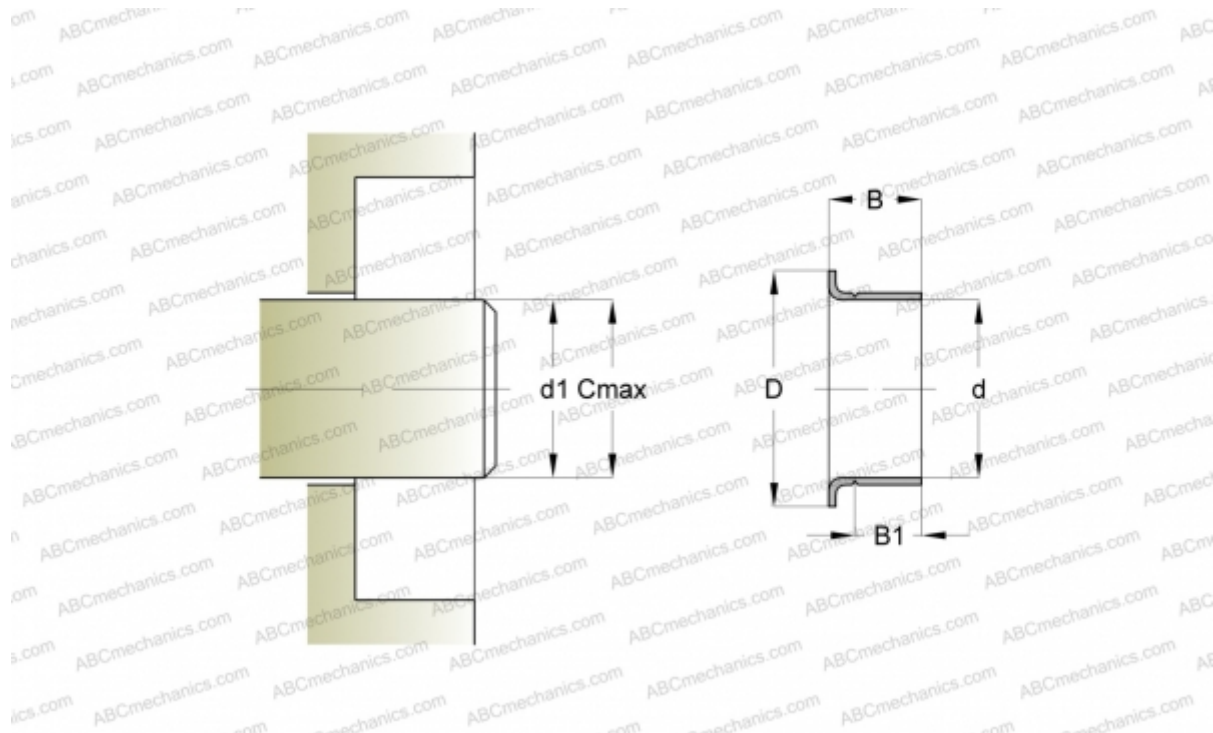




## 99843 SKF

Wear sleeves

TYPE: Wear sleeves, SKF Speedi-Sleeve, Speedi-Sleeve Gold, for heavy industrial applications (SKF)



### Technical specification

#### DIMENSIONS, MM

d1	69,720
d	69,850
D	79,380
B	23,830
B1	19,840
C	69,880

#### MANUFACTURER

[SKF](#)

#### INTERCHANGE

CR	<a href="#">CR 99843</a>
----	--------------------------

#### CALCULATION DATA

Maximum shaft surface speed	0,001 m/s
-----------------------------	-----------

