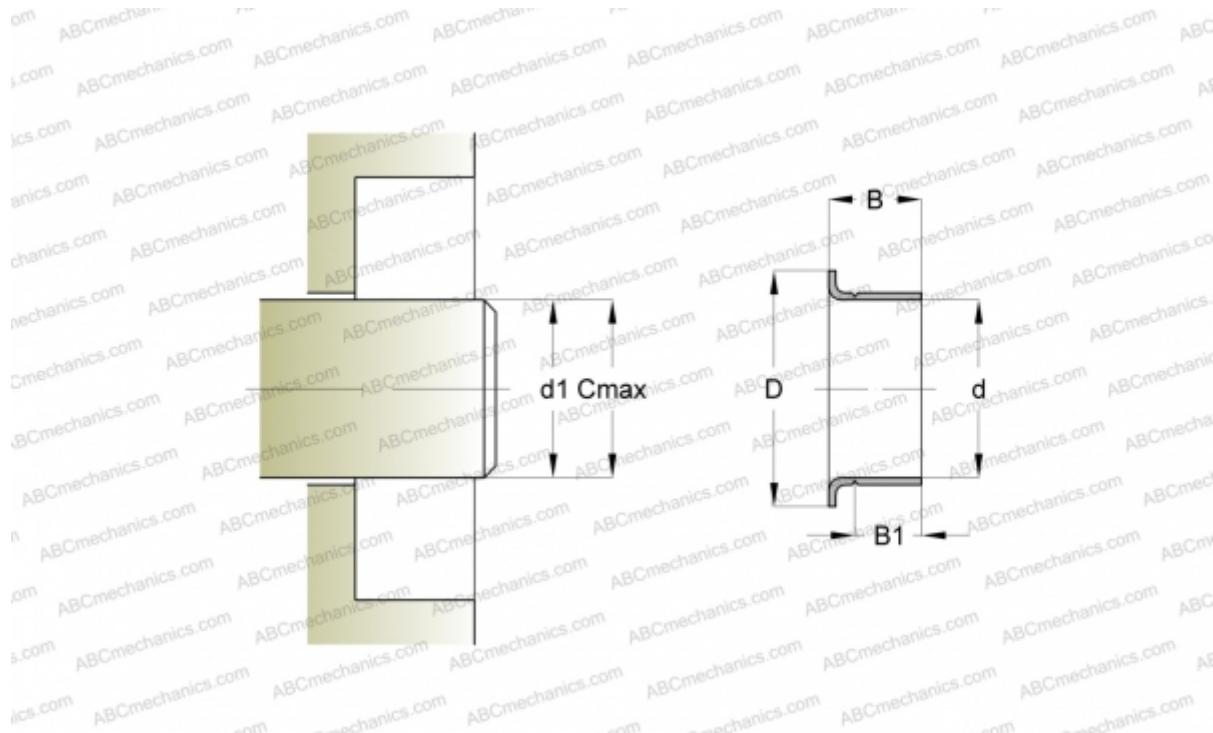




99845 SKF

Wear sleeves

TYPE: Wear sleeves, SKF Speedi-Sleeve, Speedi-Sleeve Gold, for heavy industrial applications (SKF)



Technical specification

DIMENSIONS, MM

$d1$	72,090
d	72,090
D	81,920
B	16,660
$B1$	12,700
C	72,240

MANUFACTURER

[SKF](#)

INTERCHANGE

CR	CR 99845
----	--------------------------

CALCULATION DATA

Maximum shaft surface speed	0,001 m/s
-----------------------------	-----------

