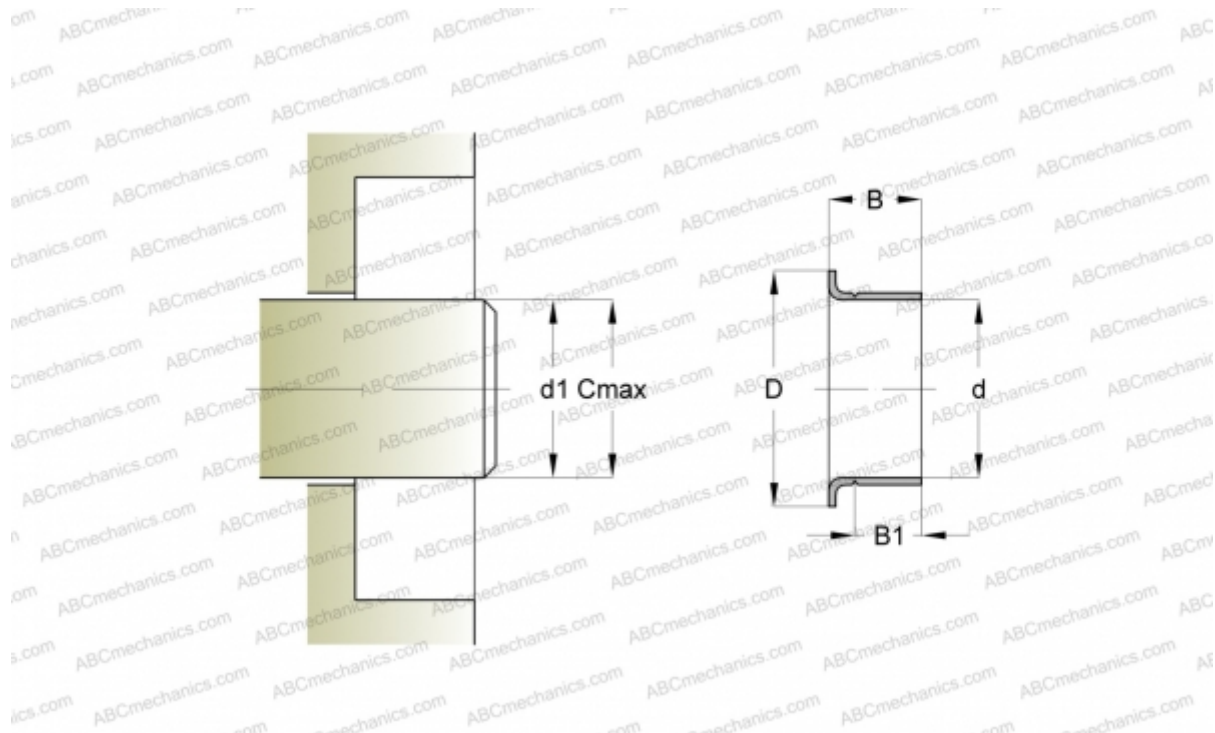




## CR 99845 CR

Wear sleeves

TYPE: Wear sleeves, SKF Speedi-Sleeve, Speedi-Sleeve Gold, for heavy industrial applications (SKF)



### Technical specification

#### DIMENSIONS, MM

d1	72,090
d	72,090
D	81,920
B	16,660
B1	12,700
C	72,240

MANUFACTURER [CR](#)

#### INTERCHANGE

SKF	<a href="#">99845</a>
-----	-----------------------

#### CALCULATION DATA

Maximum shaft surface speed	0,001 m/s
-----------------------------	-----------

