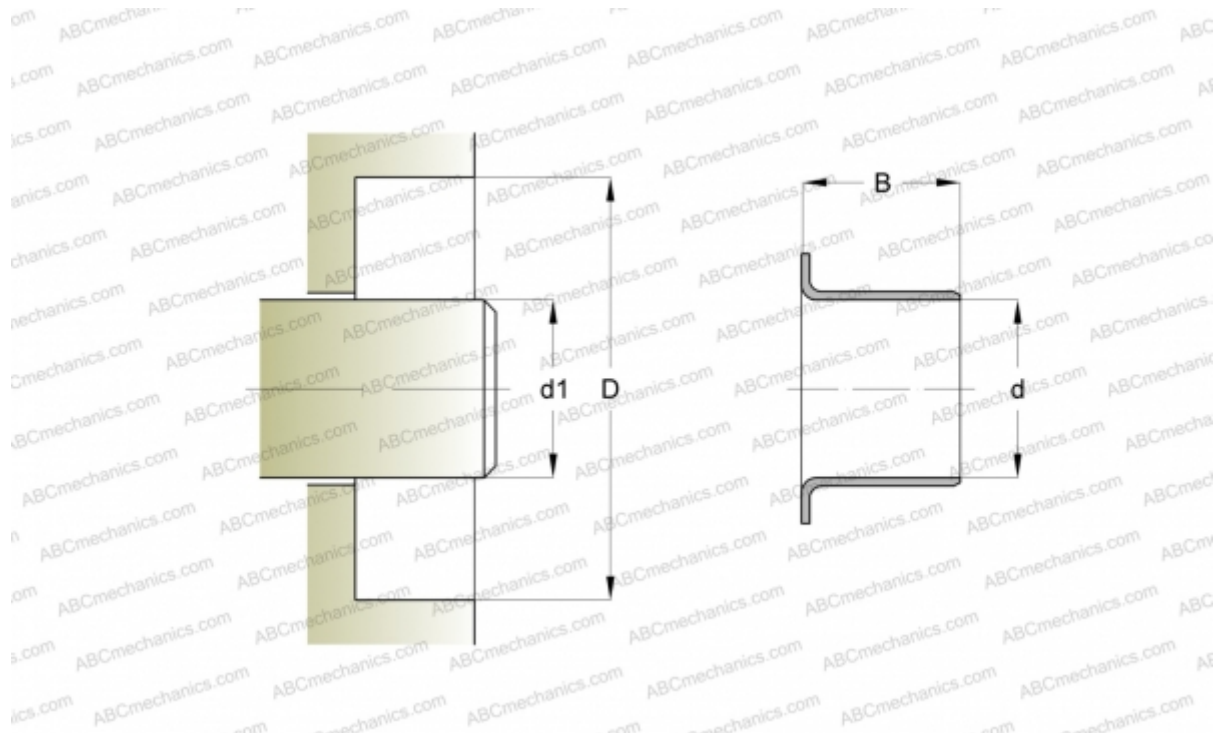




87914 SKF

Wear sleeves

TYPE: Wear sleeves, Wear sleeves for heavy industrial applications, Type LDSLV3 (SKF)



Technical specification

DIMENSIONS, MM

| | |
|----|---------|
| d1 | 220,000 |
| d | 220,000 |
| B | 40,000 |

MANUFACTURER

[SKF](#)

CALCULATION DATA

| | |
|-----------------------------|-----------|
| Maximum shaft surface speed | 0,001 m/s |
|-----------------------------|-----------|