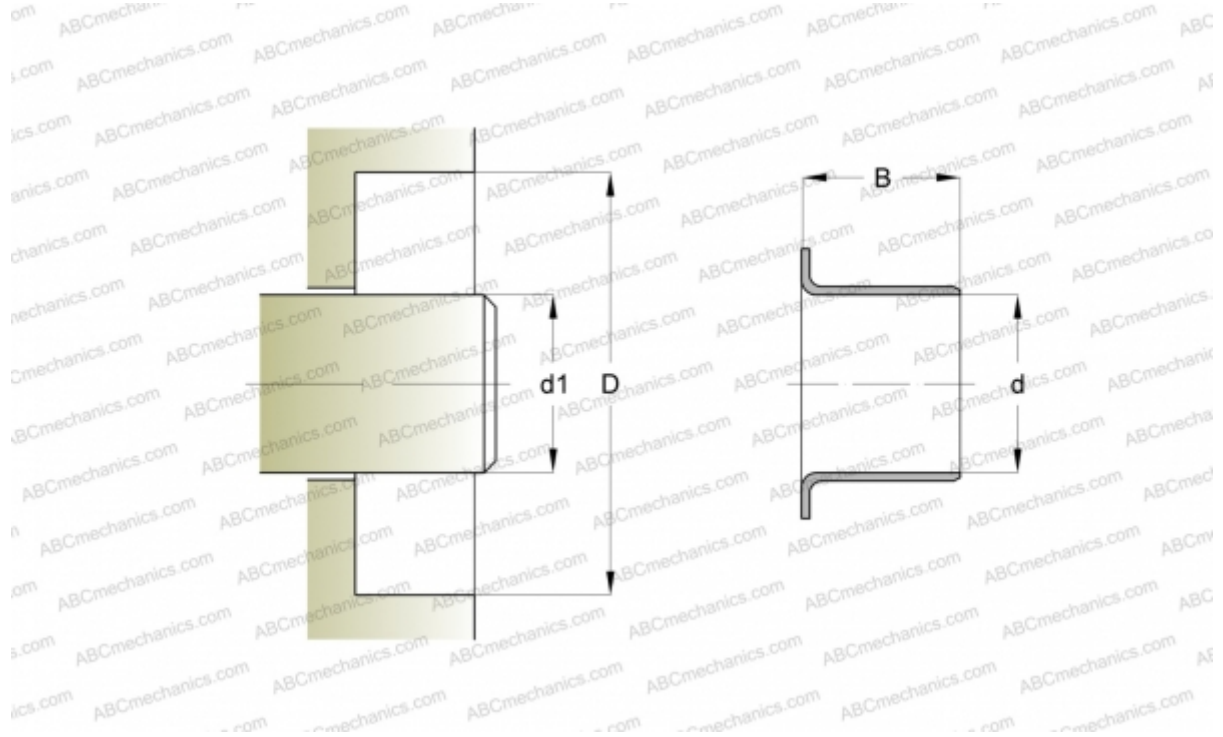


90114 SKF

Wear sleeves

TYPE: Wear sleeves, Wear sleeves for heavy industrial applications, Type LDSLV3 (SKF)



Technical specification

DIMENSIONS, MM

d1	295,200
d	295,200
B	32,000

MANUFACTURER [SKF](#)

CALCULATION DATA

Maximum shaft surface speed	0,001 m/s
-----------------------------	-----------