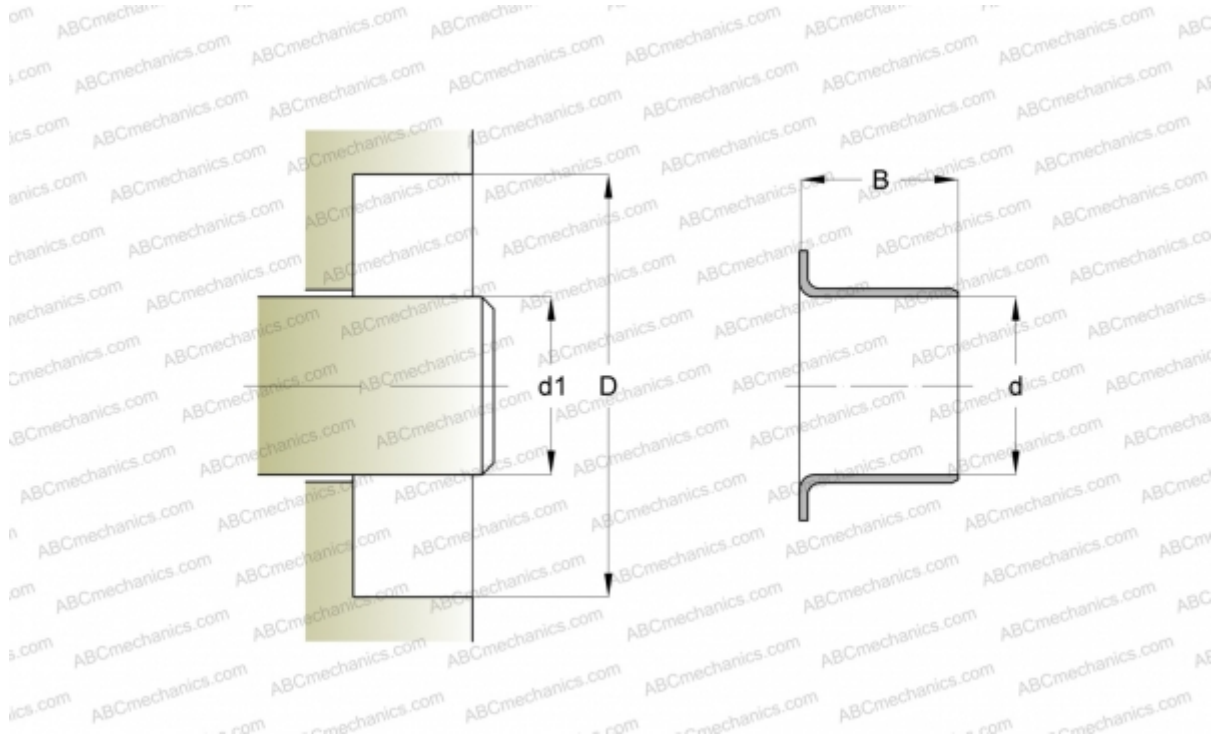


84390 SKF

Wear sleeves

TYPE: Wear sleeves, Wear sleeves for heavy industrial applications, Type LDSLV3 (SKF)



Technical specification

DIMENSIONS, MM

d1	325,450
d	325,450
B	50,800

MANUFACTURER [SKF](#)

CALCULATION DATA

Maximum shaft surface speed	0,001 m/s
-----------------------------	-----------