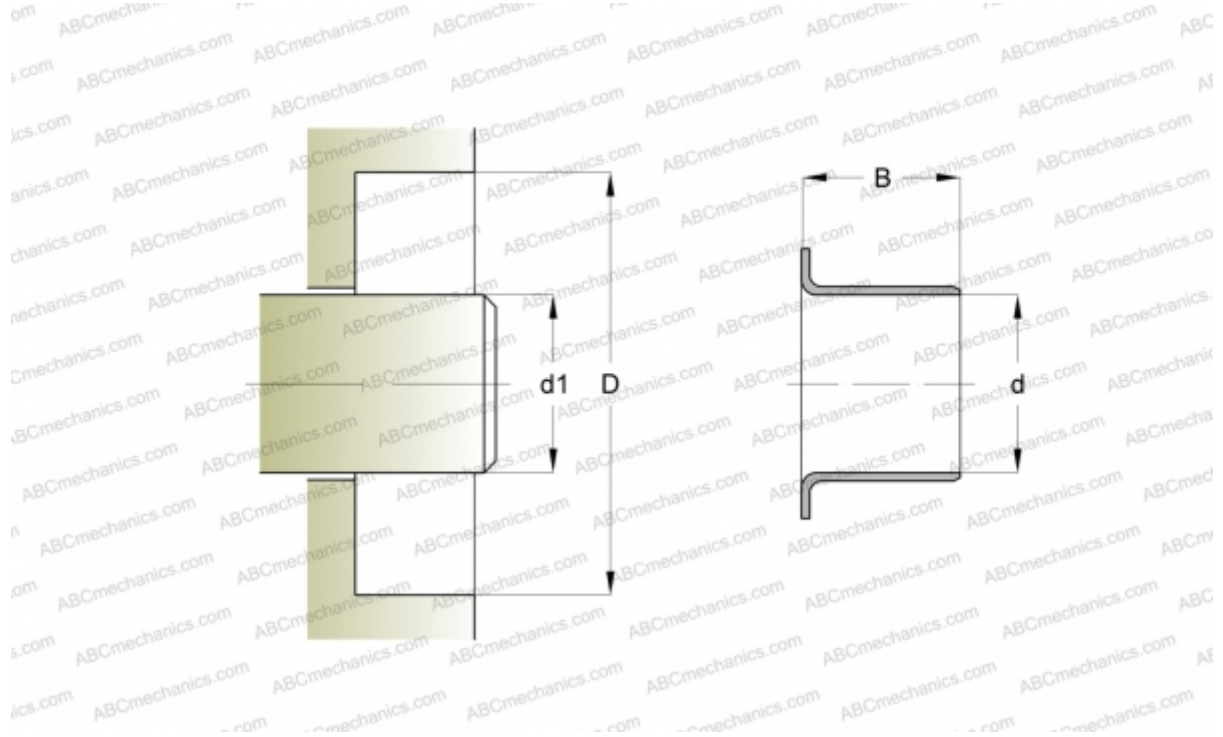


## 81352 SKF

Wear sleeves

TYPE: Wear sleeves, Wear sleeves for heavy industrial applications, Type LDSLV3 (SKF)



### Technical specification

#### DIMENSIONS, MM

d1	355,600
d	355,600
B	38,100

**MANUFACTURER** [SKF](#)

#### CALCULATION DATA

Maximum shaft surface speed	0,001 m/s
-----------------------------	-----------