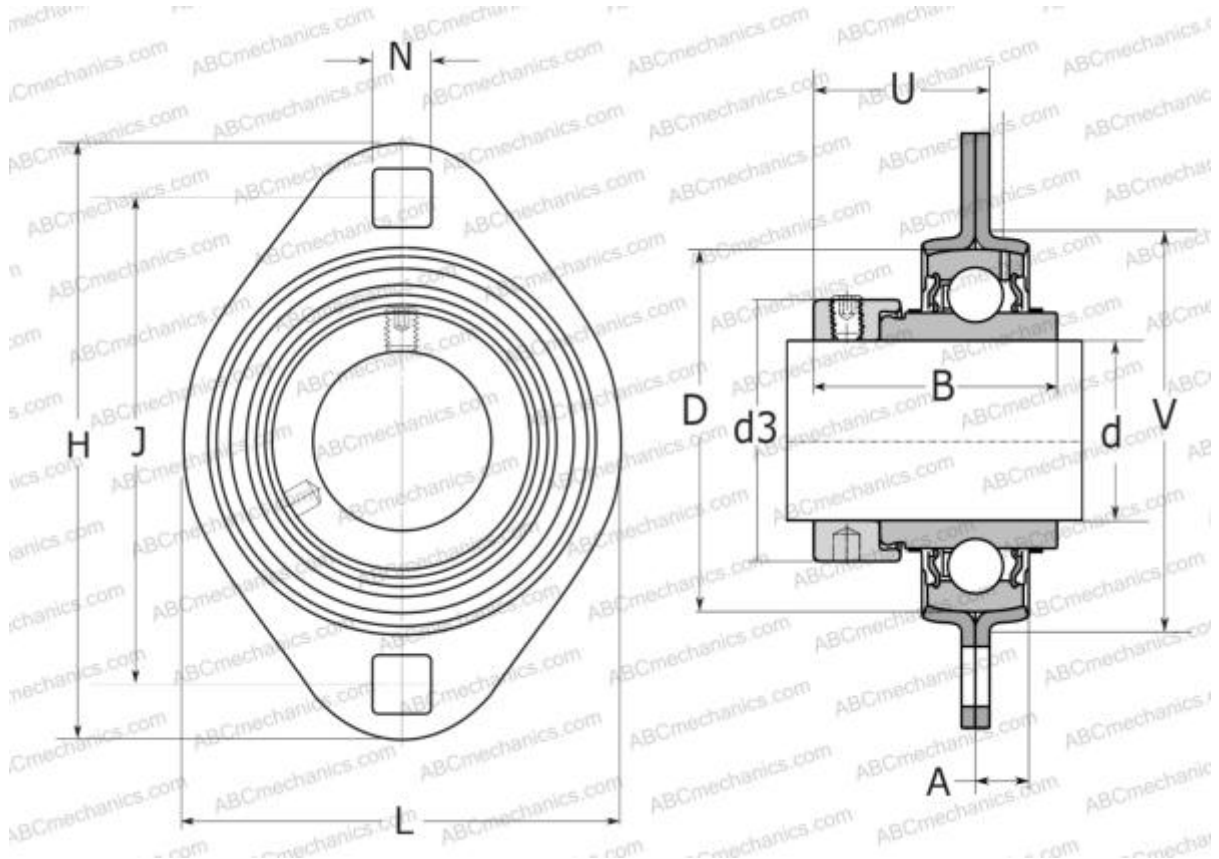


PFT 35 WF SKF

Ball bearing units

TYPE: Housing units, Two-bolt flanged housing units, Sheet steel housing, Radial insert ball bearing with eccentric locking collar, Type PFT..WF (SKF)



Technical specification

DIMENSIONS, MM

d	35,000
D	72,000
B	51,100
L	94,000
H	122,000
A	10,000
J	100,000
N	11,000
d3	51,100
U	34,800
V	81,000

WEIGHT, KG

Bearing

YEL 207-2F

Housing

PFT 72

MANUFACTURER

[SKF](#)

CALCULATION DATA

Basic dynamic load rating, C	25,500 kN
Basic static load rating, Co	15,300 kN
Fatigue load limit, Pu	0,655 kN