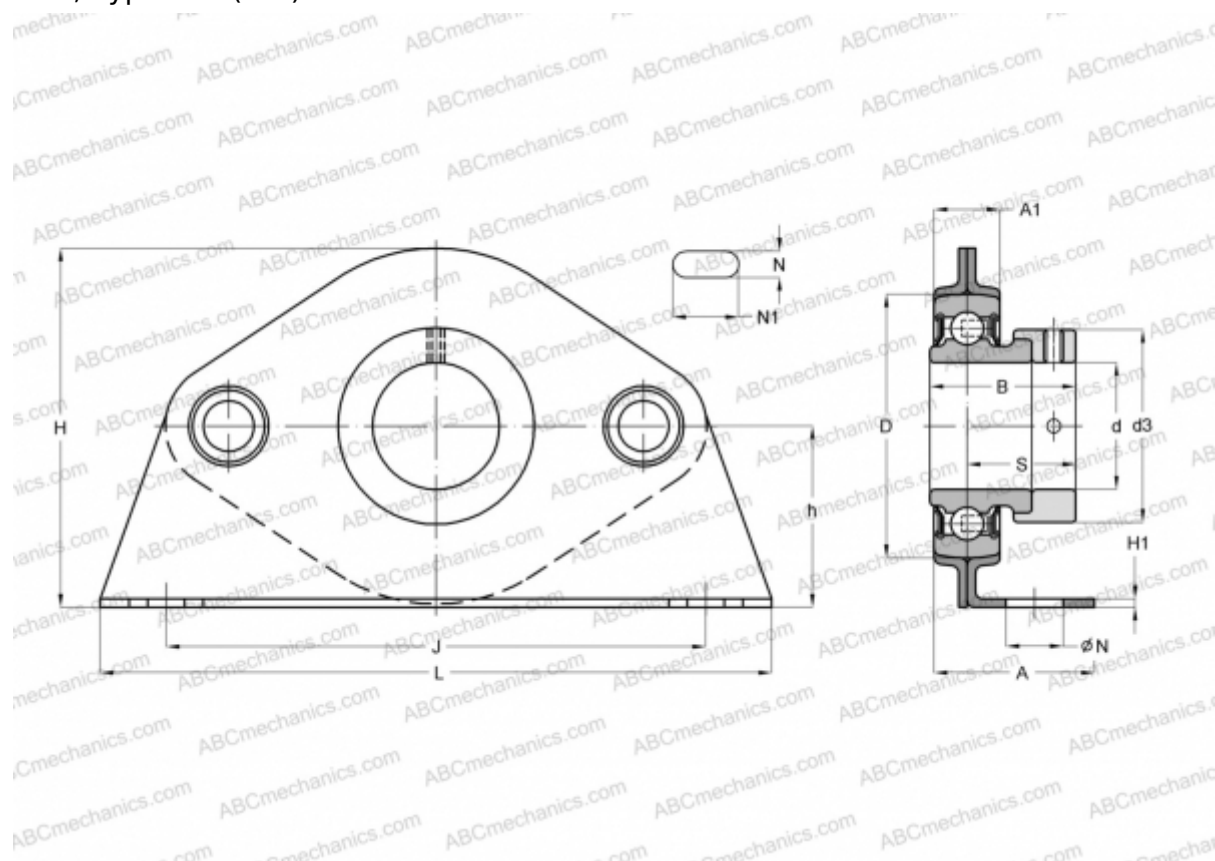




## PBS20 INA

Ball bearing units

TYPE: Housing units, Plummer block, Sheet steel housing, Radial insert ball bearing with eccentric locking collar, Type PBS (INA)



### Technical specification

#### DIMENSIONS, MM

|    |         |
|----|---------|
| d  | 20,000  |
| D  | 47,000  |
| B  | 31,000  |
| L  | 127,000 |
| H  | 66,800  |
| A  | 33,000  |
| J  | 97,000  |
| A1 | 15,800  |
| H1 | 3,000   |
| N  | 10,500  |
| N1 | 5,600   |
| S  | 23,500  |
| d3 | 33,000  |
| h  | 33,600  |

#### WEIGHT, KG

0,450

Bearing

RAE20-NPP-B

Housing

GEH47-PBS

#### MANUFACTURER

[INA](#)

#### CALCULATION DATA

|                              |           |
|------------------------------|-----------|
| Basic dynamic load rating, C | 12,800 kN |
| Basic static load rating, Co | 6,600 kN  |