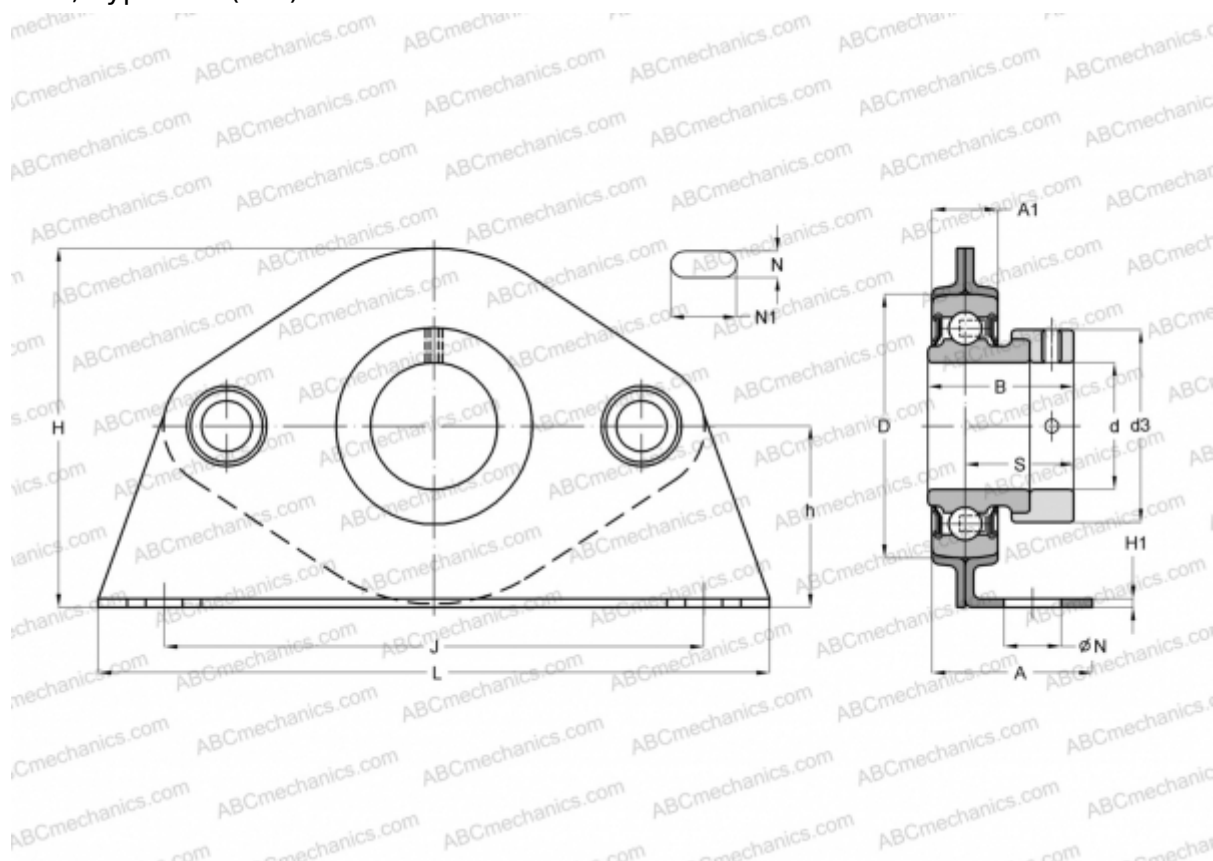




PBS30 INA

Ball bearing units

TYPE: Housing units, Plummer block, Sheet steel housing, Radial insert ball bearing with eccentric locking collar, Type PBS (INA)



Technical specification

DIMENSIONS, MM

d	30,000
D	62,000
B	35,800
L	159,000
H	85,000
A	38,900
J	119,000
A1	17,400
H1	3,400
N	13,500
N1	8,000
S	26,700
d3	44,000
h	42,900

WEIGHT, KG

0,790

Bearing

RAE30-NPP-B

Housing

GEH62-PBS

MANUFACTURER

[INA](#)

CALCULATION DATA

Basic dynamic load rating, C	19,500 kN
Basic static load rating, Co	11,300 kN