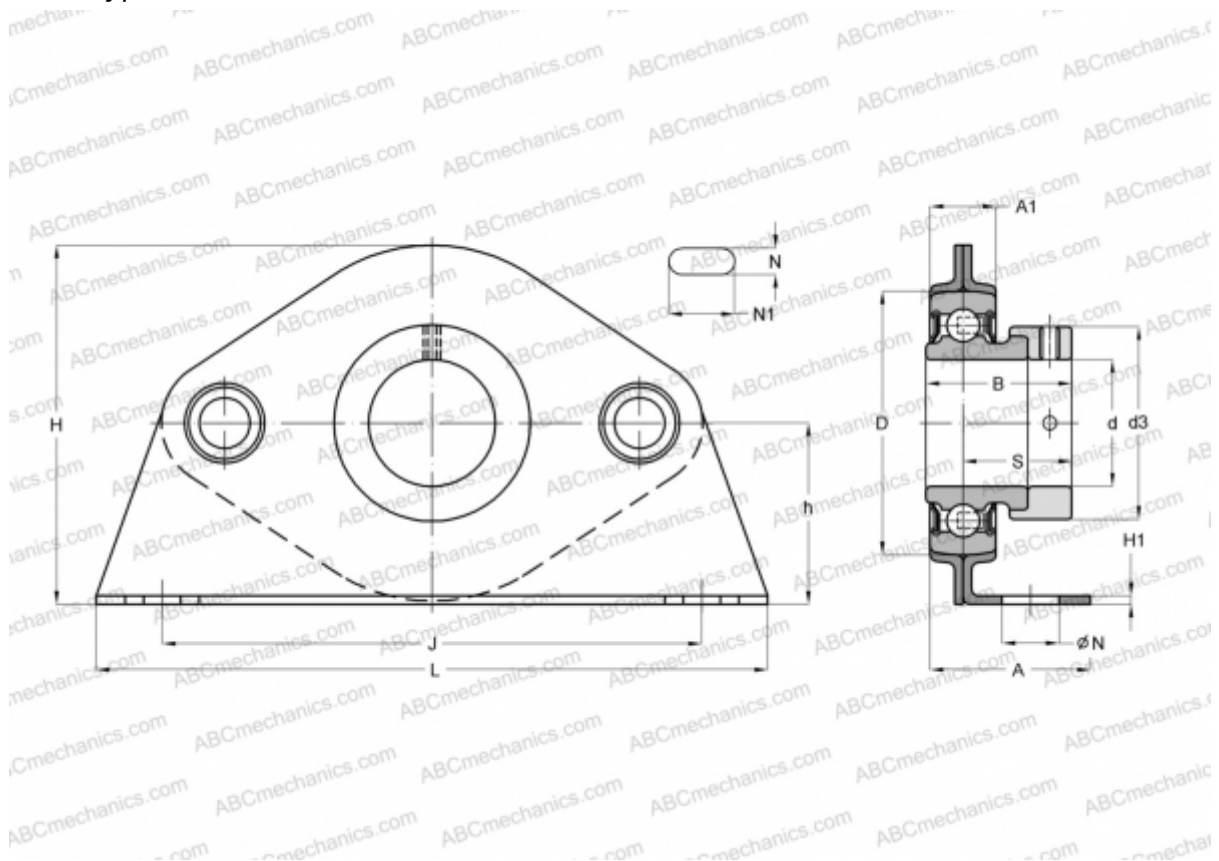


PBS40 INA

Ball bearing units

TYPE: Housing units, Plummer block, Sheet steel housing, Radial insert ball bearing with eccentric locking collar, Type PBS (INA)



Technical specification

DIMENSIONS, MM

d	40,000
D	80,000
B	43,800
L	180,000
H	106,000
A	53,500
J	136,500
A1	23,000
H1	4,000
N	13,500
N1	8,000
S	32,700
d3	58,000
h	55,000

WEIGHT, KG

Bearing	1,330
Housing	RAE40-NPP-B GEH80-PBS

MANUFACTURER

[INA](#)

CALCULATION DATA

Basic dynamic load rating, C	32,500 kN
Basic static load rating, Co	19,800 kN