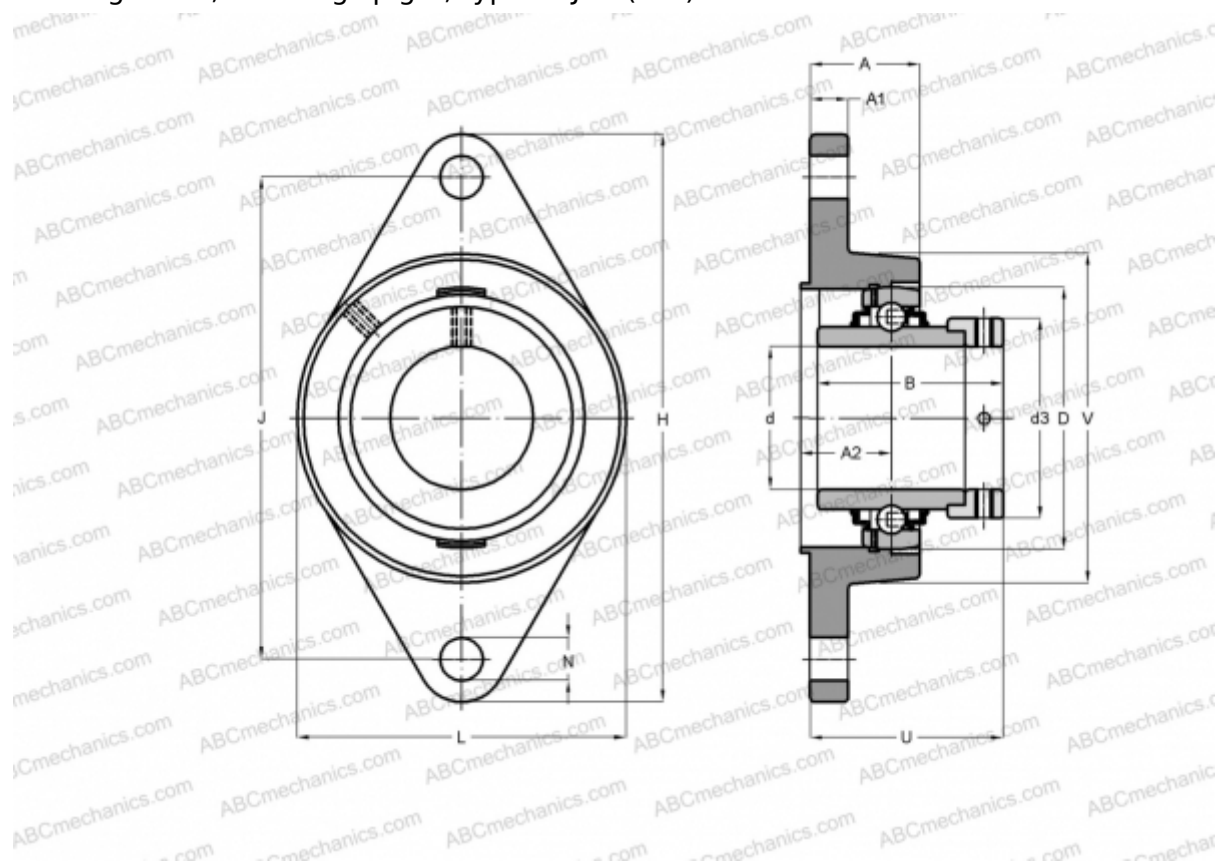




RCJTZ60 INA

Ball bearing units

TYPE: Housing units, Two-bolt flanged housing units, Cast iron housing, Radial insert ball bearing with eccentric locking collar, Centring spigot, type RCJTZ (INA)



Technical specification

DIMENSIONS, MM

d	60,000
D	110,000
B	77,900
L	138,000
H	238,000
A	42,000
J	77,900
A1	16,000
A2	30,000
N	18,000
d3	84,000
U	76,800
V	138,000
Q	Rp1/8

WEIGHT, KG

3,740

Bearing

GE60-KRR-B

Housing

GG.CJTZ12

MANUFACTURER

[INA](#)

CALCULATION DATA

Basic dynamic load rating, C	52,000 kN
Basic static load rating, Co	36,000 kN

