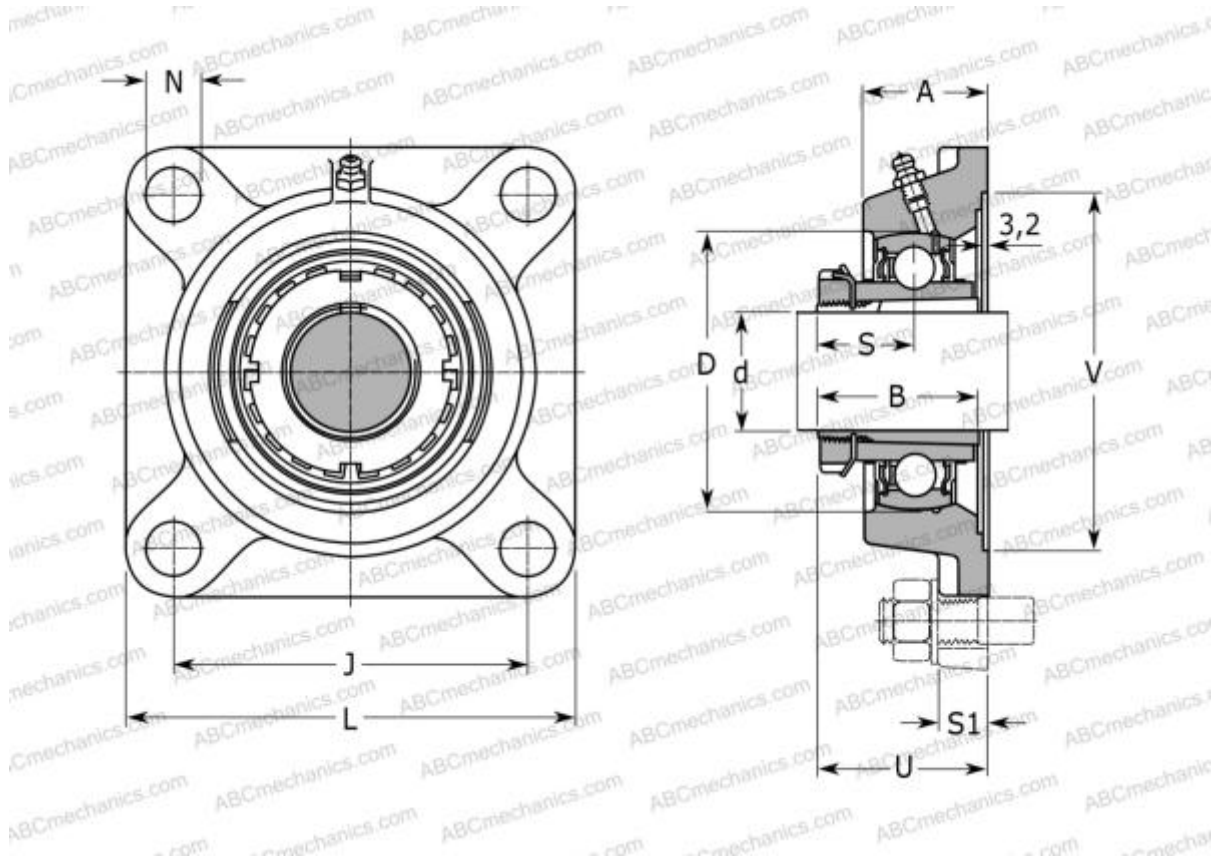


## UKFE207H SNR

Ball bearing units

TYPE: Housing units, Four-bolt flanged housing units, Cast iron housing, Radial insert ball bearing with adapter sleeve, With inner ring extended on both sides, massive bearing units



### Technical specification

#### DIMENSIONS, MM

d	30,000
D	72,000
B	43,000
L	118,000
A	36,000
J	92,000
A1	12,500
A2	21,000
N	14,000
S	22,500
d3	52,000
U	43,500
Q	R1/8"

**WEIGHT, KG** 1,600

Bearing	UK207 +
Housing	FE207
Adapter sleeve	H2307

#### MANUFACTURER

[SNR](#)

#### INTERCHANGE

ABC	<a href="#">UKFE207H</a>
SKF	<a href="#">FYJ 35 KF</a>

#### CALCULATION DATA

Basic dynamic load rating, C	25,700 kN
Basic static load rating, Co	15,200 kN
Operating temperature min	-20 °C
Operating temperature max	110 °C