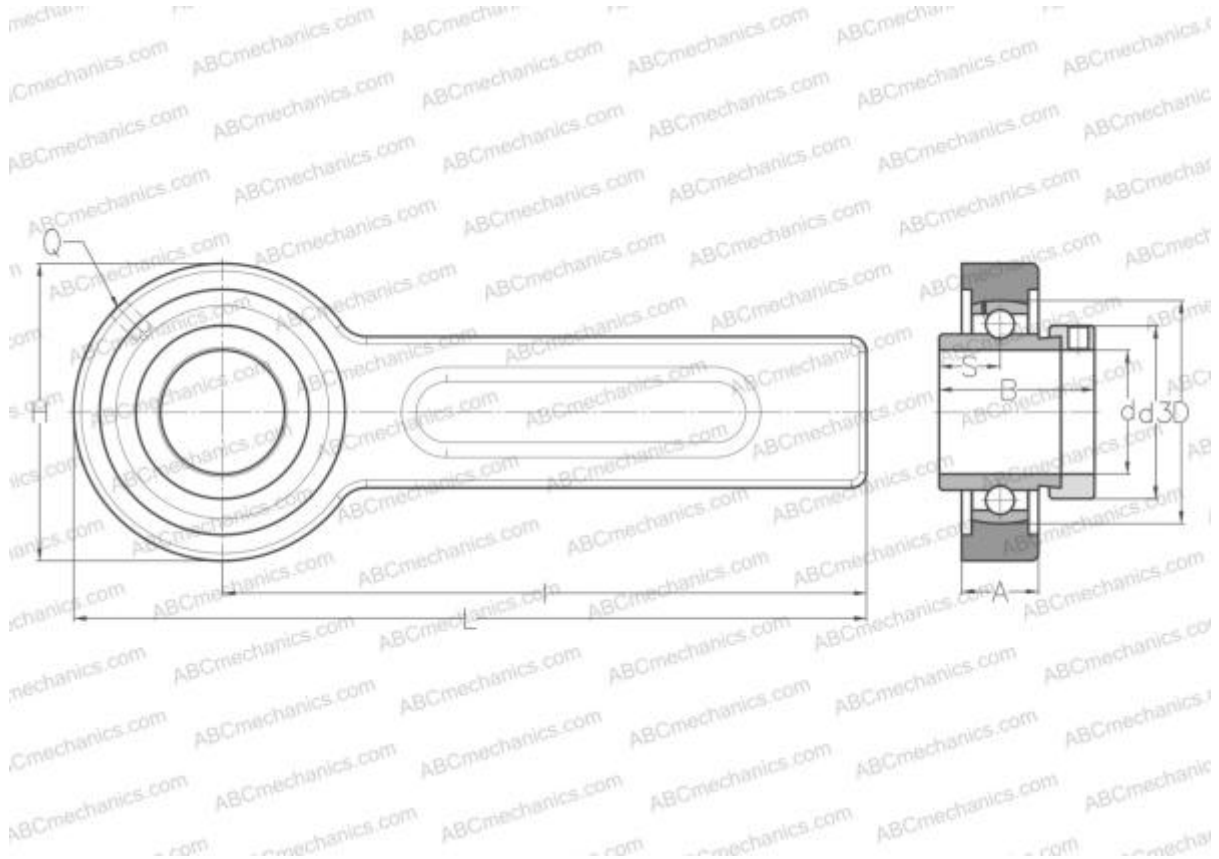


EXSP202 ABC

Ball bearing units

TYPE: Housing units, Conveyor belt tensioner unit, Radial insert ball bearing with eccentric locking collar, With inner ring extended on both sides



Technical specification

DIMENSIONS, MM

d	15,000
D	47,000
B	43,500
L	264,000
H	78,000
A	21,000
H1	41,000
S	17,000
I	225,000
Q	R1/8"

WEIGHT, KG 1,800

Bearing	EX202
Housing	03-205/47

MANUFACTURER

[ABC](#)

INTERCHANGE

SNR

[EXSP202](#)