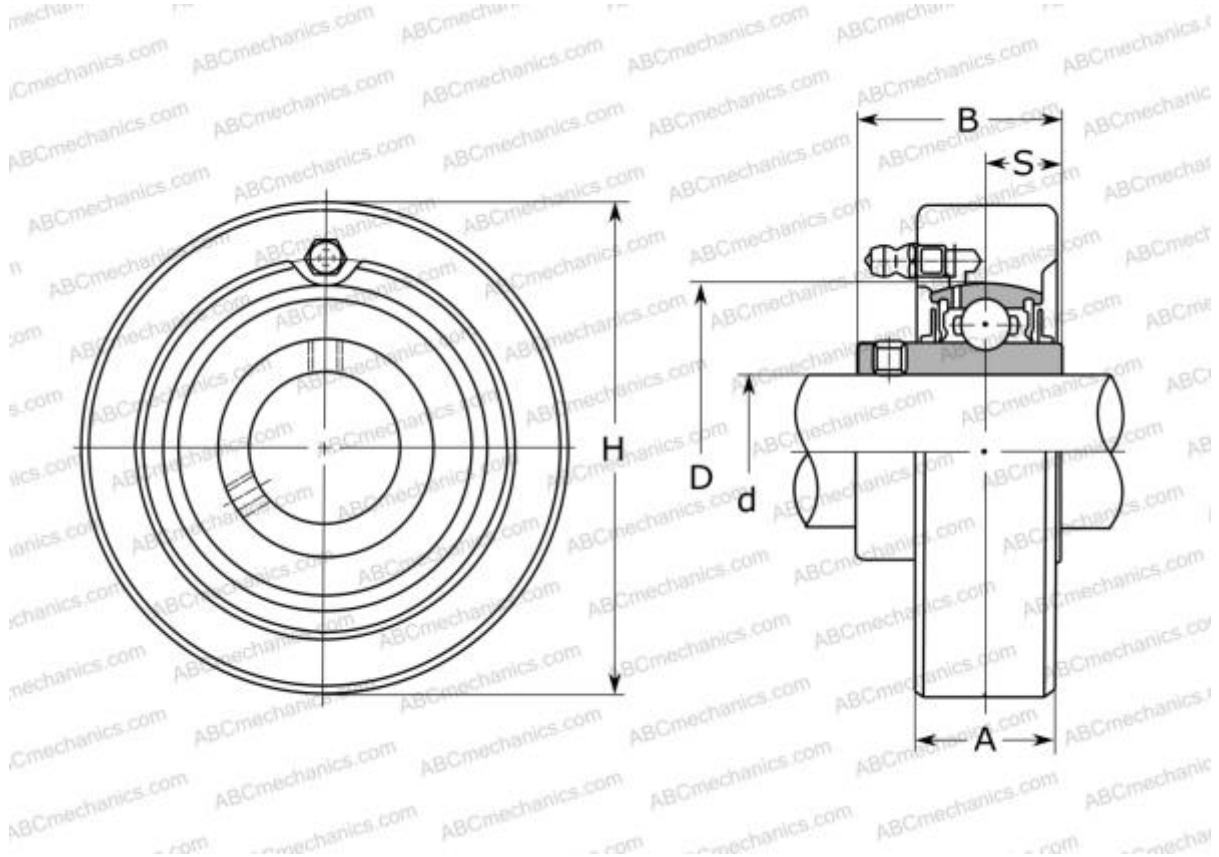


UCC 201 ASAHI

Ball bearing units

TYPE: Housing units, Cartridge units, Cast iron housing, Radial insert ball bearing with grub screws in inner ring, With inner ring extended on both sides



Technical specification

DIMENSIONS, MM

d	12,000
D	47,000
B	31,000
H	72,000
A	20,000
S	12,700

WEIGHT, KG

0,500

Bearing	UC 201
Housing	C 204

MANUFACTURER [ASAHI](#)

INTERCHANGE

ABC	UCC201
SNR	UCC201
SLB	UCC 201
FYH	UCC201
NTN	UCC 201 D1